

WAAS CH 69637 W01A	APP CRS 012°	Rwy Idg 3202 TDZE 235 Apt Elev 236
--	------------------------	---

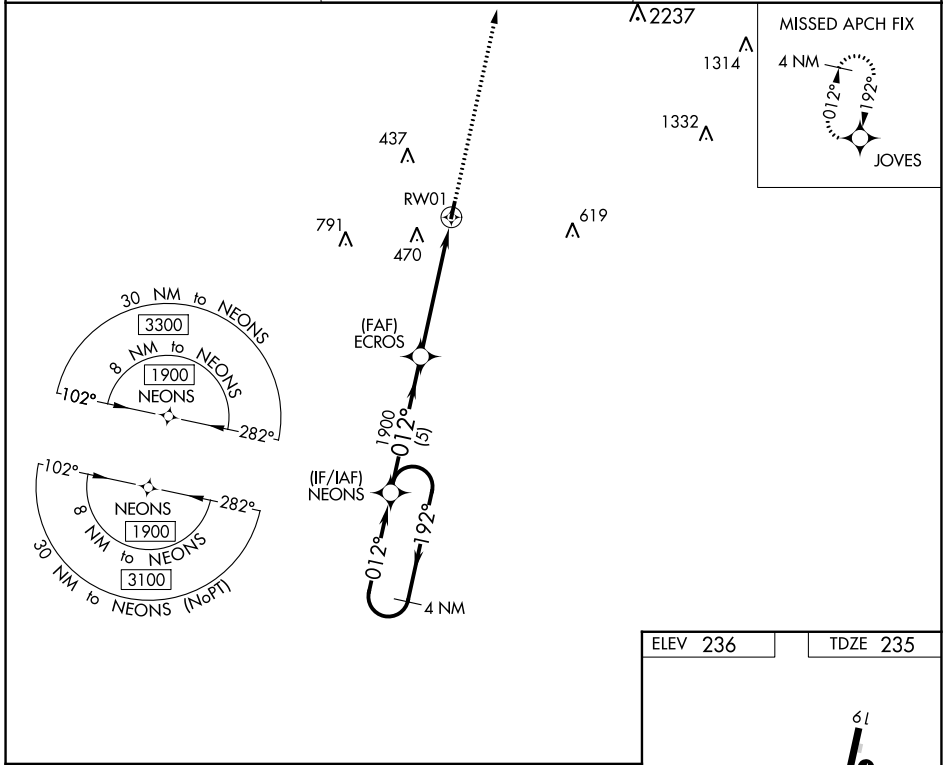
RNAV (GPS) RWY 1

SHERIDAN-GRANT COUNTY RGNL (9M8)

▽ DME/DME RNP-0.3 NA. Helicopter visibility reduction below 1 SM NA.
△ NA Night Landing: Rwy 1 NA. Use Pine Bluff altimeter setting, when not received, use Little Rock altimeter setting and increase all MDA 20 feet: increase LP and LNAV Cat C visibility 1/8 mile, and Circling Cat C visibility 1/4 mile.

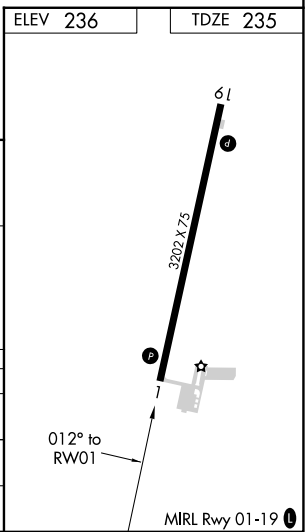
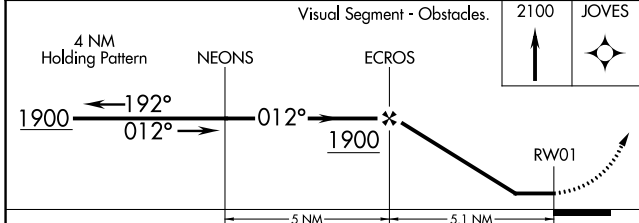
MISSED APPROACH: Climb to 2100 direct JOVES and hold.

PBF ASOS 120.775	LITTLE ROCK APP CON 135.4 353.6	UNICOM 122.8 (CTAF) 0
----------------------------	---	--



SC-1, 11 JUL 2024 to 08 AUG 2024

SC-1, 11 JUL 2024 to 08 AUG 2024



CATEGORY	A	B	C	D
LP MDA	760-1	525 (600-1)	760-1½ 525 (600-1½)	NA
LNAV MDA	800-1	565 (600-1)	800-1⅝ 565 (600-1⅝)	NA
C CIRCLING	800-1 564 (600-1)	840-1 604 (700-1)	960-2 724 (800-2)	NA