

WAAS CH 63237 W19A	APP CRS 192°	Rwy Idg 3202 TDZE 236 Apt Elev 236
--	------------------------	---

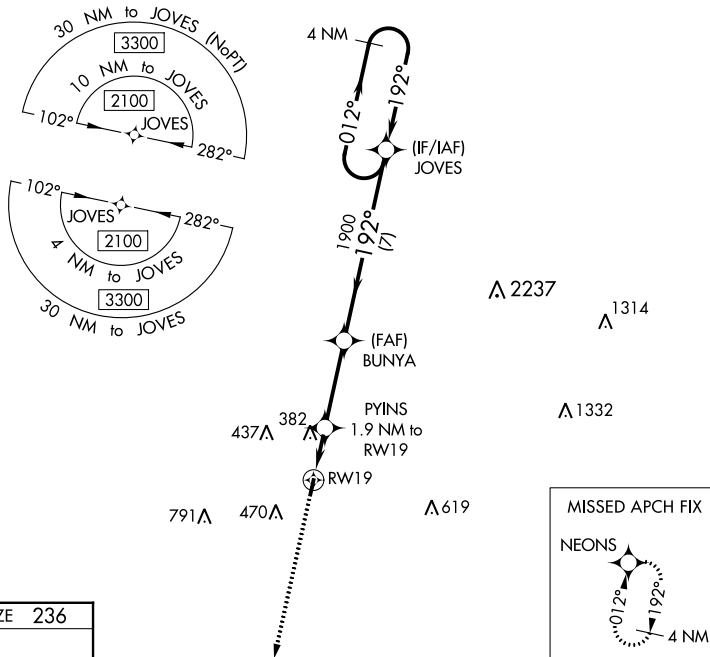
RNAV (GPS) RWY 19

SHERIDAN-GRANT COUNTY RGNL (9M8)

NA Baro-VNAV NA. DME/DME RNP-0.3 NA. Helicopter visibility reduction below 3/4 SM NA. Night landing: Rwy 1 NA. Use Pine Bluff altimeter setting, when not received, use Little Rock altimeter setting and increase all DA 5 feet and all MDA 20 feet: increase Circling Cat C visibility 1/4 mile.

MISSED APPROACH: Climb to 1900 direct NEONS and hold.

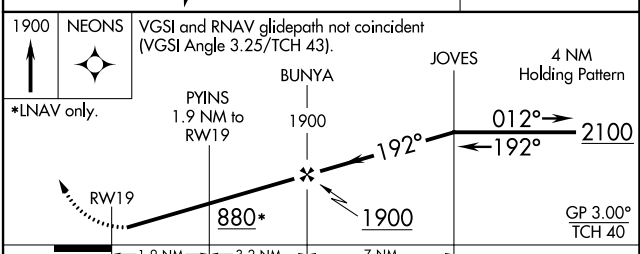
PBF ASOS 120.775	LITTLE ROCK APP CON 135.4 353.6	UNICOM 122.8 (CTAF)
----------------------------	---	-------------------------------



SC-1, 11 JUL 2024 to 08 AUG 2024

SC-1, 11 JUL 2024 to 08 AUG 2024

ELEV 236	TDZE 236
----------	----------



CATEGORY	A	B	C	D
LPV DA	590-1 1/4	354 (400-1 1/4)		NA
LNAV/VNAV DA	682-1 1/2	446 (500-1 1/2)		NA
LNAV MDA	700-1	464 (500-1)	700-1 3/8 464 (500-1 3/8)	NA
C CIRCLING	740-1 504 (600-1)	840-1 604 (700-1)	960-2 724 (800-2)	NA