

WAAS CH <b>45644</b> <b>W36A</b>	APP CRS <b>002°</b>	Rwy Idg <b>3205</b> TDZE <b>189</b> Apt Elev <b>189</b>
--	------------------------	---

# RNAV (GPS) RWY 36

DEWITT MUNI/WHITCOMB FLD (5M1)

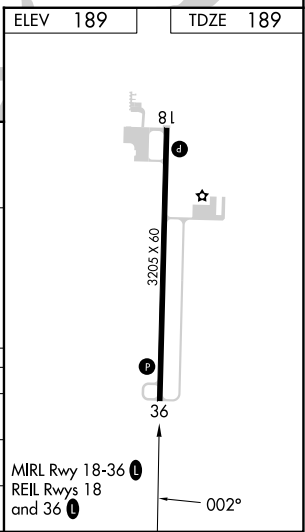
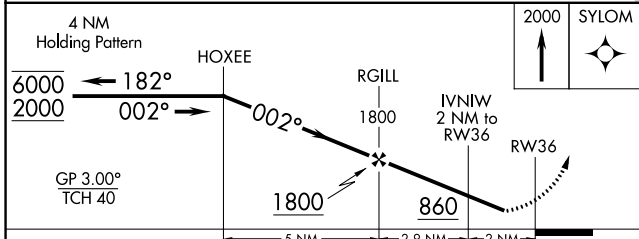
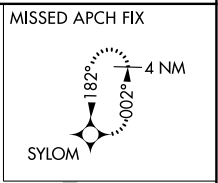
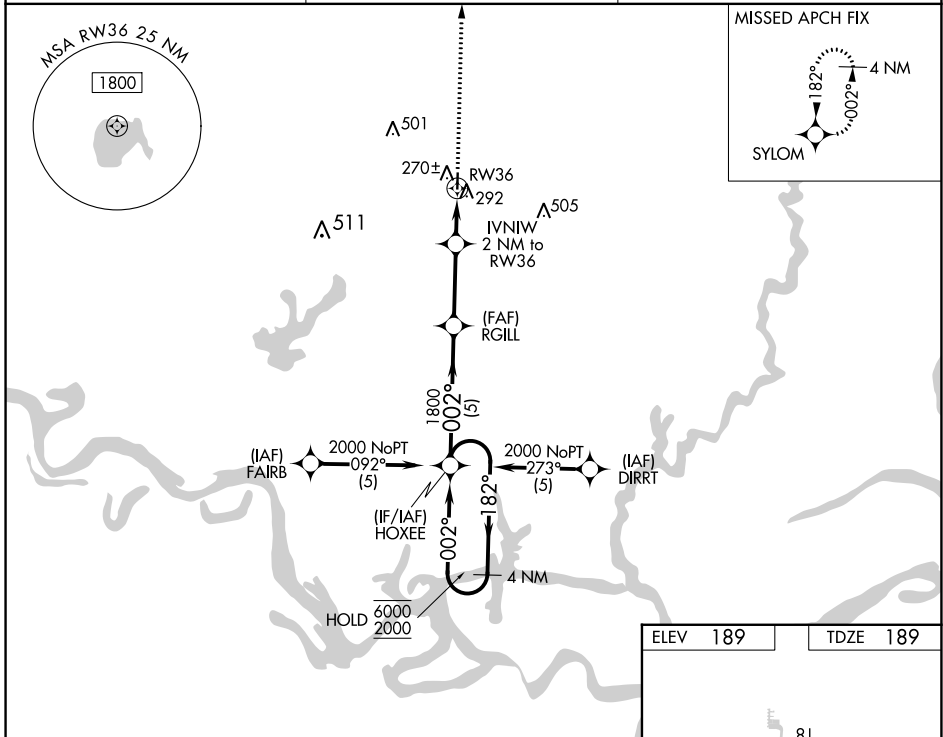
RNP APCH - GPS.

**⚠** Rwy 36 helicopter visibility reduction below 3/4 SM NA. Baro-VNAV NA. Use Stuttgart altimeter setting; when not received, use Pine Bluff altimeter setting and increase LPV DA to 515 feet, LNAV/VNAV DA to 515 feet, and increase all MDAs 20 feet.

**⚠** NA

MISSED APPROACH: Climb to 2000 direct SYLOM and hold.

SGT AWOS-3PT <b>119.025</b>	MEMPHIS CENTER <b>135.3 335.8</b>	CTAF <b>122.90</b>
--------------------------------	--------------------------------------	-----------------------



CATEGORY	A	B	C	D
LPV DA	500-1	311 (400-1)		NA
LNAV/VNAV DA	500-1	311 (400-1)		NA
LNAV MDA	620-1	431 (500-1)		NA

SC-1, 11 JUL 2024 to 08 AUG 2024

SC-1, 11 JUL 2024 to 08 AUG 2024