

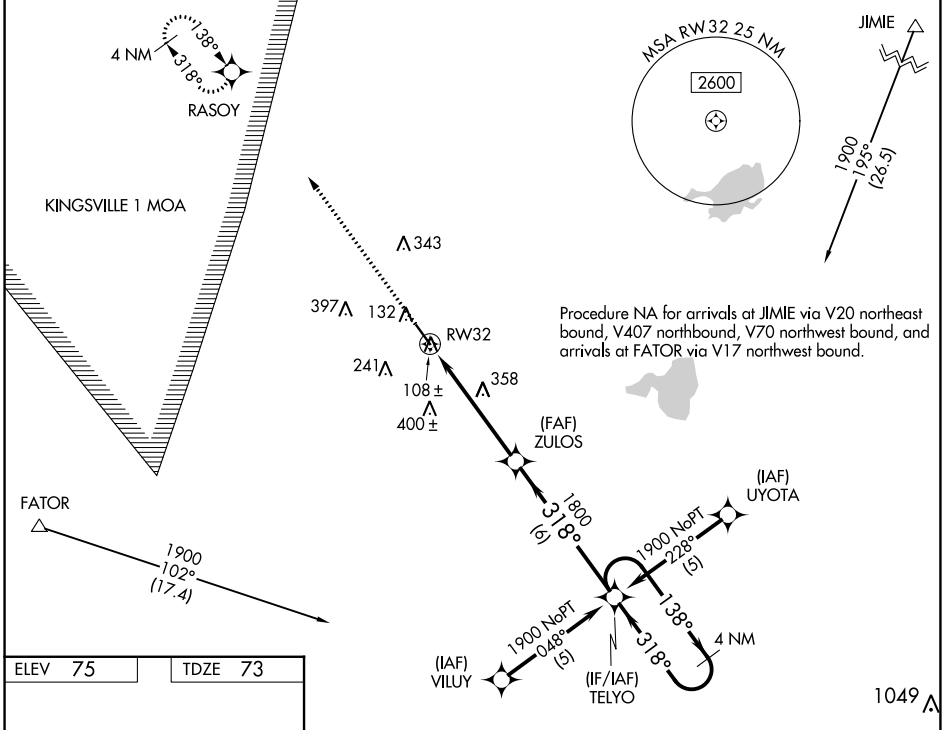
WAAS CH <b>70701</b> <b>W32A</b>	APP CRS <b>318°</b>	Rwy Idg <b>5000</b> TDZE <b>73</b> Apt Elev <b>75</b>
--	------------------------	---

# RNAV (GPS) RWY 32

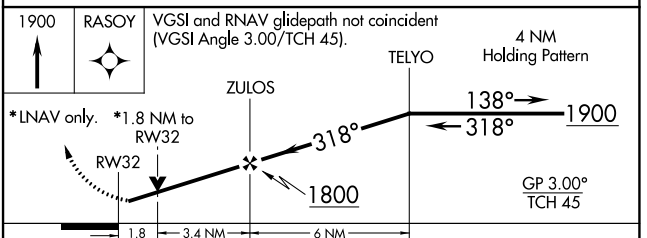
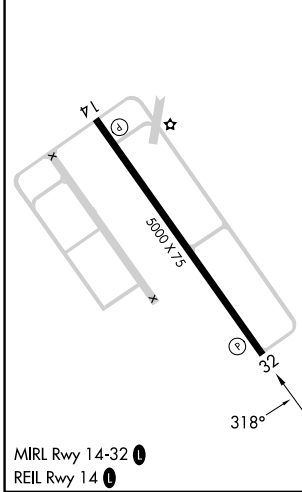
SOUTH TEXAS INTL AT EDINBURG (E.B.G)

RNP APCH-GPS.  
 Rwy 32 helicopter visibility reduction below 3/4 SM NA.  
 For uncompensated Baro-VNAV systems LNAV/VNAV NA below -15°C or above 48°C.  
 MISSED APPROACH: Climb to 1900 direct RASOY and hold.

AWOS-3PT <b>118.025</b>	VALLEY APP CON <b>126.55 377.2</b>	UNICOM <b>122.8 (CTAF) 0</b>
----------------------------	---------------------------------------	---------------------------------



ELEV 75	TDZE 73
---------	---------



CATEGORY	A	B	C	D
LPV DA	323-3/4 250 (300-3/4)			
LNAV/VNAV DA	361-1 288 (300-1)			
LNAV MDA	660-1	587 (600-1)	660-1 1/2 587 (600-1 1/2)	660-1 3/4 587 (600-1 3/4)
CIRCLING	660-1	585 (600-1)	760-2 685 (700-2)	760-2 1/4 685 (700-2 1/4)

SC-3, 11 JUL 2024 to 08 AUG 2024

SC-3, 11 JUL 2024 to 08 AUG 2024