

APP CRS	Rwy Idg	N/A
<b>333°</b>	TDZE	N/A
	Apt Elev	<b>63</b>

# RNAV (GPS)-A

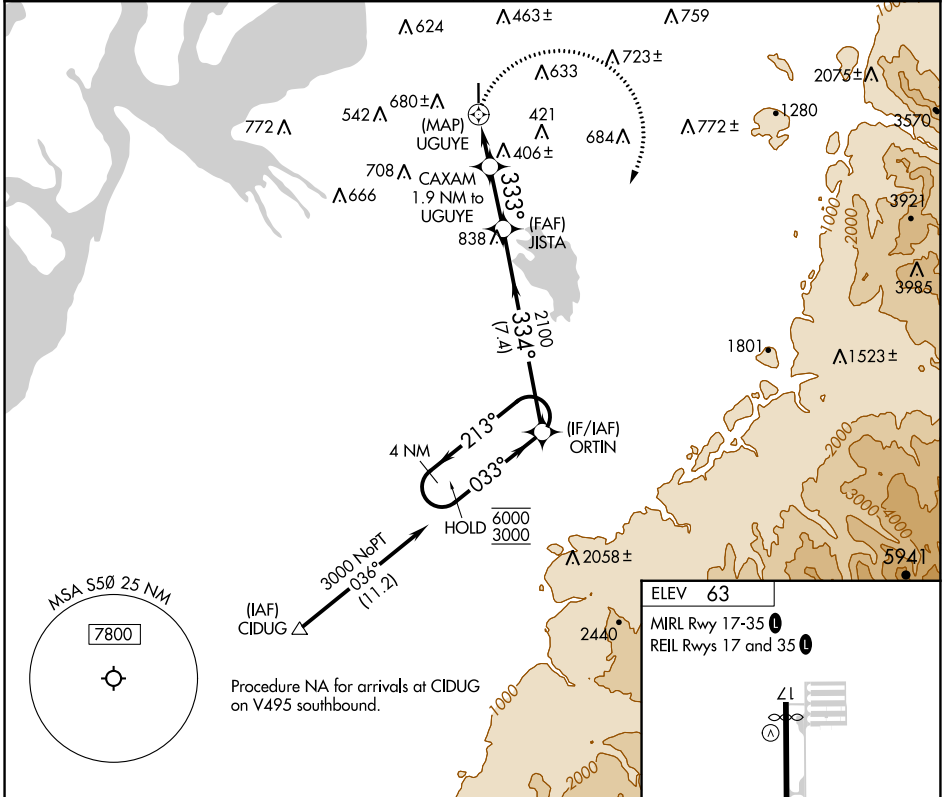
AUBURN MUNI (S50)

RNP APCH - GPS.

**NA** Circling NA west of Rwy 17-35. Rwy 17 and 35 helicopter visibility reduction below 1 SM NA. When Circling to Rwy 17, 35 at night, operational VGSI required, remain on or above VGSI glidepath until threshold. Use Seattle-Tacoma Intl altimeter setting. Procedure NA at night when VGSI inoperative.

**MISSED APPROACH:** Climbing right turn to 3000 direct ORTIN and hold.

SEA ASOS <b>118.0</b>	SEATTLE APP CON <b>123.85</b>	CLNC DEL <b>123.85</b>	UNICOM <b>122.975 (CTAF)</b>
--------------------------	----------------------------------	---------------------------	---------------------------------



NW-1, 11 JUL 2024 to 08 AUG 2024

NW-1, 11 JUL 2024 to 08 AUG 2024

3000	ORTIN	ORTIN	4 NM Holding Pattern
		JISTA	213° → 6000
UGUYE → CAXAM (1.9 NM to UGUYE) ≤ 4.00° TCH 53 → 334° → 2100		ORTIN	← 033° 3000
1140		7.4 NM	
1.9 NM    2.3 NM    7.4 NM			
CATEGORY	A	B	C
<b>CIRCLING</b>	920-1¼ 857 (900-1¼)	1040-1½ 977 (1000-1½)	NA

