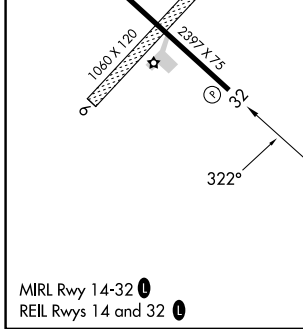
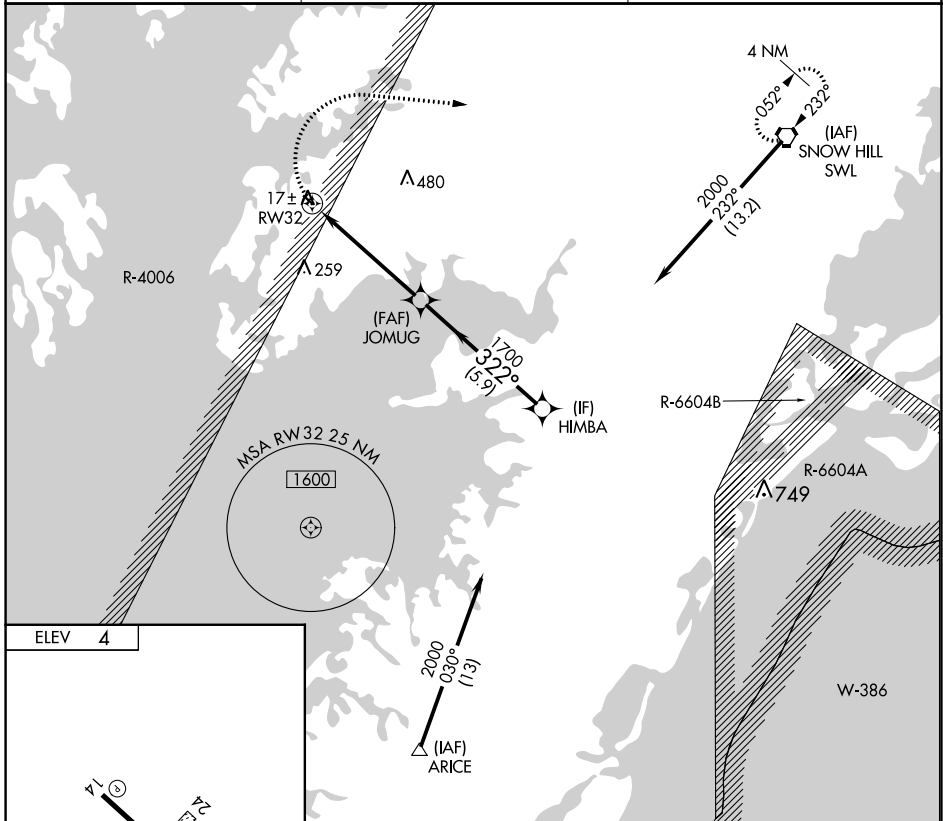


APP CRS <b>322°</b>	Rwy Idg TDZE Apt Elev	<b>N/A</b> <b>N/A</b> <b>4</b>
------------------------	-----------------------------	--------------------------------------

# RNAV (GPS)-B

CRISFIELD-SOMERSET COUNTY (W41)

RNP APCH.		MISSED APPROACH: Climbing right turn to 2000 direct SWL VORTAC and hold.
<p>▼ Circling NA to Rwys 6 and 24. ▲ NA Procedure NA at night. Use Wallops Island altimeter setting.</p>		
WAL ASOS <b>119.175</b>	PATUXENT APP CON ★ <b>127.95 314.0</b>	UNICOM <b>122.8 (CTAF) 0</b>



MIRL Rwy 14-32 0  
REL Rwys 14 and 32 0

2000	SWL	Visual Segment - Obstacles.			
CATEGORY	A	B	C	D	
<b>C</b> CIRCLING	520-1	516 (600-1)		NA	

NE-3, 11 JUL 2024 to 08 AUG 2024

NE-3, 11 JUL 2024 to 08 AUG 2024