

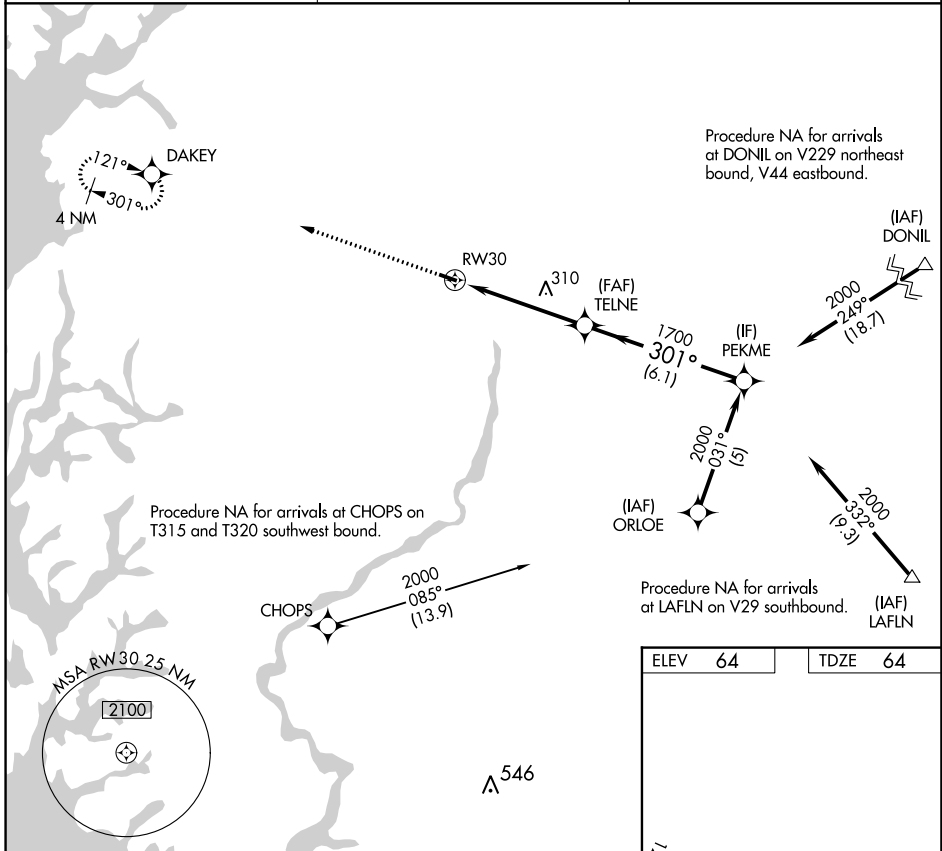
APP CRS	Rwy Idg	3214
301°	TDZE	64
	Apt Elev	64

RNAV (GPS) RWY 30

GOODEN AIRPARK (RJD)

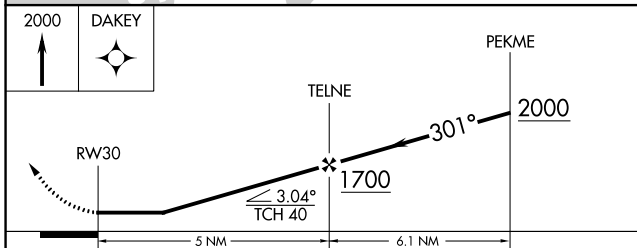
RNP APCH - GPS.	Procedure NA at night. Use Easton altimeter setting; when not received, procedure NA. Rwy 30 helicopter visibility reduction below 1 SM NA.	MISSED APPROACH: Climb to 2000 direct DAKEY and hold.
-----------------	---	---

ESN AWOS-3PT 124.475	DOVER APP CON 132.425 257.875	UNICOM 122.8 (CTAF)
--------------------------------	---	-------------------------------



NE-3, 11 JUL 2024 to 08 AUG 2024

NE-3, 11 JUL 2024 to 08 AUG 2024



ELEV 64	TDZE 64
---------	---------

3214 X 50

301°

30°

LIRL Rwy 12-30

REIL Rwy 12 and 30

CATEGORY	A	B	C	D
LNAV MDA	660-1	596 (600-1)		NA
CIRCLING	660-1	596 (600-1)		NA