

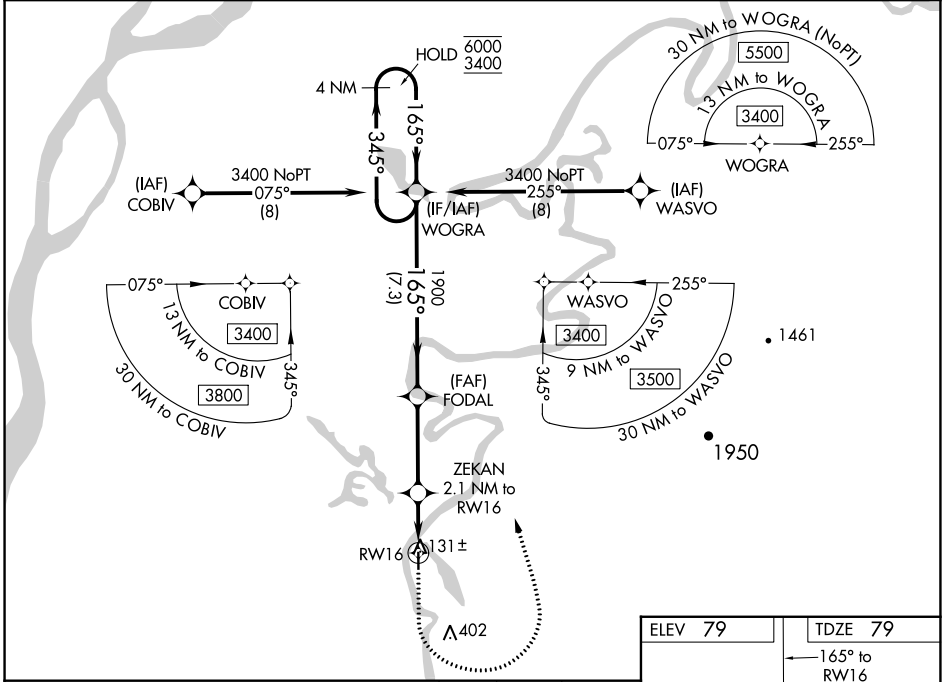
WAAS CH 45610 W16A	APP CRS 165°	Rwy Idg TDZE 79 Apt Elev 79
---------------------------------	------------------------	---

RNAV (GPS) RWY 16

SHAGELUK (SHX) (PAHX)

RNP APCH.	MISSED APPROACH: Climb to 1000 then climbing left turn to 3400 direct WOGRA and hold.
<p>▼ For uncompensated Baro-VNAV systems, LNAV/VNAV NA below -25°C or above 54°C. ▲ Circling NA for Cats C and D east of Rwy 16-34.</p>	

AWOS-3P 121.575	ANCHORAGE CENTER 135.7 335.5	KENAI RADIO 122.4	UNICOM 122.8 (CTAF)
---------------------------	--	-----------------------------	-------------------------------



<p>4 NM Holding Pattern</p> <p>6000 ← 345° 3400 → 165°</p> <p>GP 3.00° TCH 40</p>		<p>WOGRA</p> <p>FODAL 1900</p> <p>ZEKAN 2.1 NM to RWY 16</p> <p>* 1.4 NM to RWY 16</p> <p>* 800</p>		<p>1000 3400 WOGRA</p> <p>Water Rwy: 18W-36W 5000 X 1000</p> <p>* LNAV only</p>	
<p>7.3 NM</p>		<p>3.5 NM</p>		<p>0.7 1.4 NM</p>	
CATEGORY	A	B	C	D	
LPV DA		329-1	250 (300-1)		
LNAV/VNAV DA		329-1	250 (300-1)		
LNAV MDA		400-1	321 (400-1)		
▲ CIRCLING	460-1 381 (400-1)	540-1 461 (500-1)	540-1½ 461 (500-1½)	800-2¼ 721 (800-2¼)	

