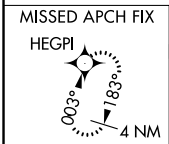
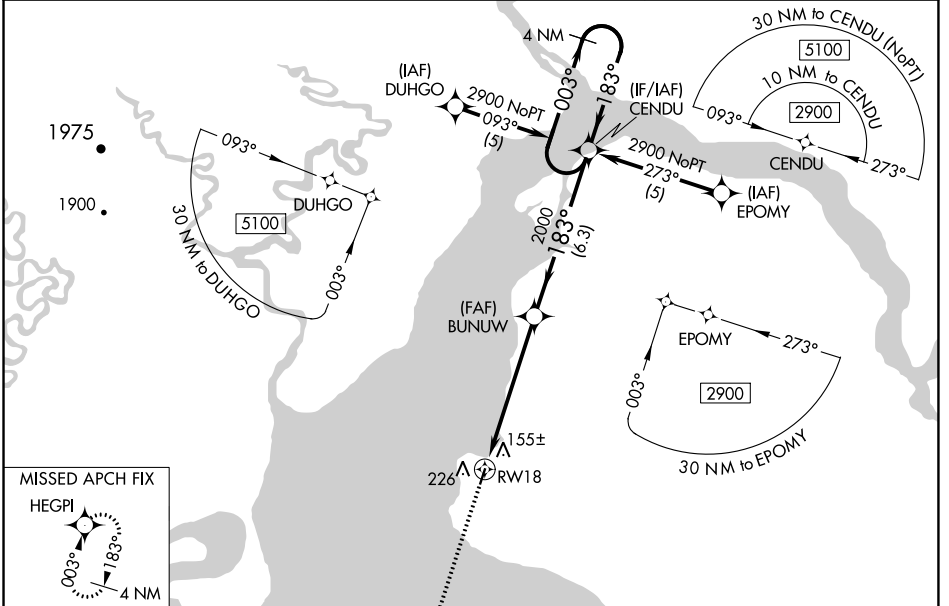


WAAS CH 82213 W18A	APP CRS 183°	Rwy Idg 3200 TDZE 61 Apt Elev 80
--	------------------------	---

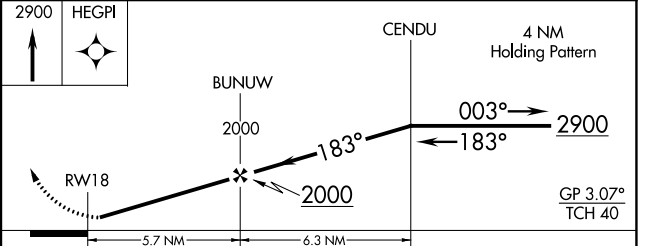
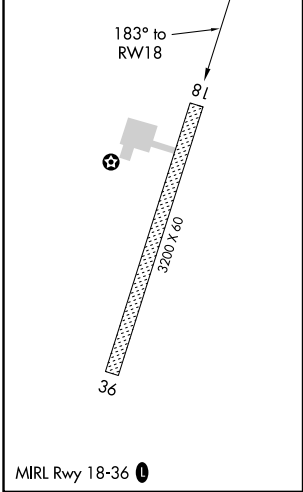
RNAV (GPS) RWY 18

CLARKS POINT (CLP) (PFCL)

RNP APCH - GPS.		MISSED APPROACH: Climb to 2900 direct HEGPI and hold.
<p>Baro-VNAV NA. Procedure NA at night. When local altimeter setting not received, use Dillingham altimeter setting. Rwy 18 helicopter visibility reduction below 1 SM NA.</p>		
AWOS-3P 121.45	ANCHORAGE CENTER 132.75 282.35	CTAF 122.9



ELEV 80	TDZE 61
---------	---------



CATEGORY	A	B	C	D
LPV DA	355-1 294 (300-1)			
LNAV/VNAV DA	464-1½ 403 (400-1½)			
LNAV MDA	620-1	559 (600-1)	620-1½ 559 (600-1½)	620-1¾ 559 (600-1¾)
CIRCLING	620-1 540 (600-1)	700-1 620 (700-1)	700-1¾ 620 (700-1¾)	700-2 620 (700-2)

AK, 11 JUL 2024 to 05 SEP 2024

AK, 11 JUL 2024 to 05 SEP 2024