

WAAS CH <b>60930</b> <b>W34A</b>	APP CRS <b>344°</b>	Rwy Idg TDZE <b>2438</b> Apt Elev <b>2438</b>	<b>5091</b> <b>2438</b> <b>2438</b>
--	------------------------	---	---

# RNAV (GPS) RWY 34

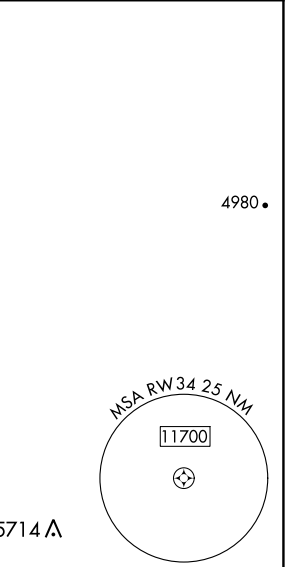
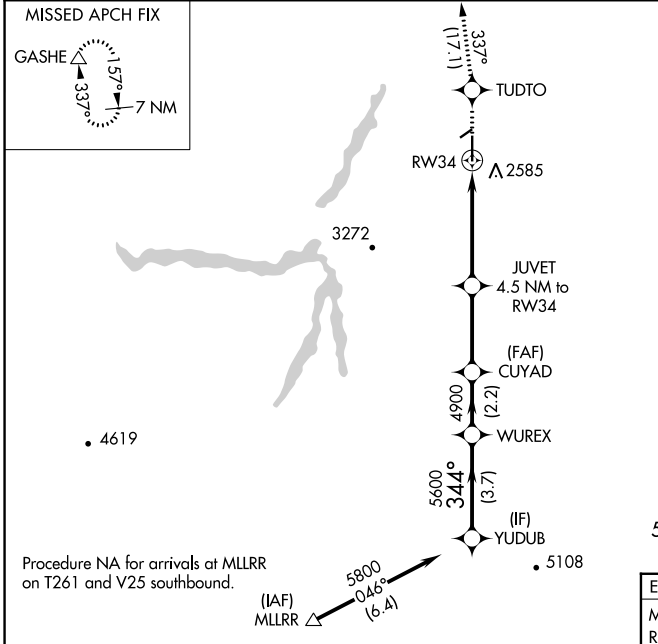
MADRAS MUNI (S33)

RNP APCH - GPS.

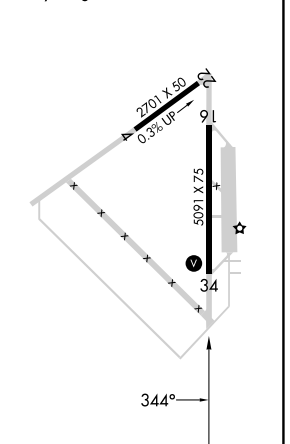
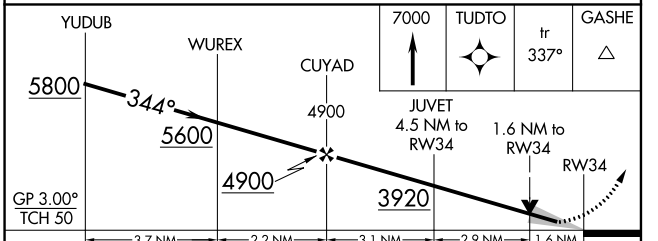
**⚠** Circling Rwy 22 NA at night. Baro-VNAV and VDP NA when using Redmond altimeter setting. For uncompensated Baro-VNAV systems, LNAV/VNAV NA below -19°C or above 54°C. When local altimeter setting not received, use Redmond altimeter setting and increase LPV DA to 2832 feet and all visibilities  $\frac{3}{8}$  SM. Increase LNAV/VNAV DA to 2846 feet and all visibilities  $\frac{1}{4}$  SM. Increase all MDAs 160 feet and LNAV visibility Cat C  $\frac{3}{8}$  SM, and Circling visibility Cat C  $\frac{3}{8}$  SM.

**MISSED APPROACH:** Climb to 7000 direct TUDTO and on track 337° to GASHE and hold, continue climb-in-hold to 7000.

AWOS-3PT <b>132.425</b>	SEATTLE CENTER <b>126.15 269.475</b>	UNICOM <b>122.8 (CTAF) ①</b>
----------------------------	---	---------------------------------



ELEV <b>2438</b>	TDZE <b>2438</b>
MRL Rwy 16-34 ①	
REIL Rwy 34 ①	



CATEGORY	A	B	C	D
LPV DA	2688- $\frac{3}{4}$ 250 (300- $\frac{3}{4}$ )			NA
LNAV/VNAV DA	2702- $\frac{7}{8}$ 264 (300- $\frac{7}{8}$ )			NA
LNAV MDA	3000-1	562 (600-1)	3000-1 $\frac{1}{8}$ 562 (600-1 $\frac{1}{8}$ )	NA
CIRCLING	3000-1 562 (600-1)	3020-1 582 (600-1)	3020-1 $\frac{1}{8}$ 582 (600-1 $\frac{1}{8}$ )	NA

NW-1, 11 JUL 2024 to 08 AUG 2024

NW-1, 11 JUL 2024 to 08 AUG 2024