

WAAS CH 50528 W17A	APP CRS 169°	Rwy Idg TDZE 1384 Apt Elev 1384	4377
--	------------------------	---	-------------

RNAV (GPS) RWY 17

BOERNE STAGE AIRFIELD (5C1)

RNP APCH-GPS.

▼ Rwy 17 helicopter visibility reduction below 1 SM NA. When local altimeter setting not received, use KSAT altimeter setting and increase all MDAs 120 feet.

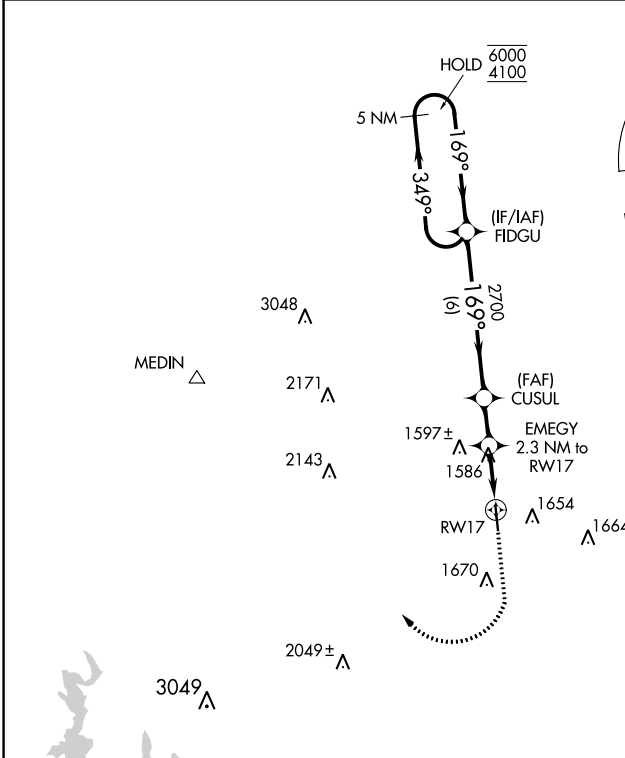
▲

MISSED APPROACH: Climb to 1900 then climbing right turn to 4100 direct MEDIN.

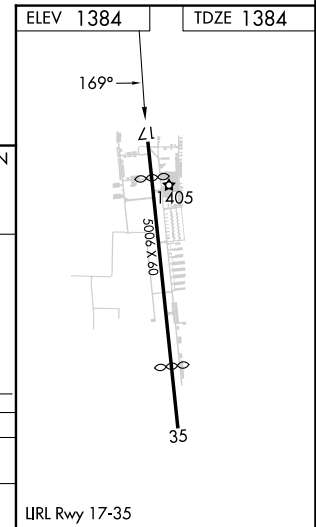
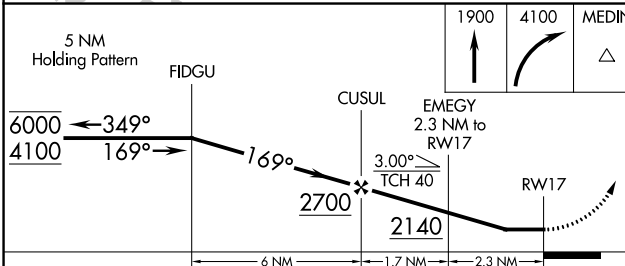
AWOS-3
118.725

SAN ANTONIO APP CON
125.1 307.0

UNICOM
123.0 (CTAF)



A circular diagram centered on FIDGU, showing a 30 NM radius. It indicates heading angles of 079° and 259° from FIDGU. Altitudes of 4100 ft are marked at the top and bottom of the circle. The text '30 NM to FIDGU (NoPT)' is written around the perimeter.



CATEGORY	A	B	C	D
IP MDA	1840-1	456 (500-1)		NA
LNAV MDA	1840-1	456 (500-1)		NA

SC-3, 11 JUL 2024 to 08 AUG 2024

SC-3, 11 JUL 2024 to 08 AUG 2024