

(SNIDR1.SNIDR) 24025

SNIDR ONE DEPARTURE (RNAV) AL-10309 (FAA)

BOERNE STAGE AIRFIELD (5C1)
SAN ANTONIO, TEXAS

SC-3, 11 JUL 2024 to 08 AUG 2024

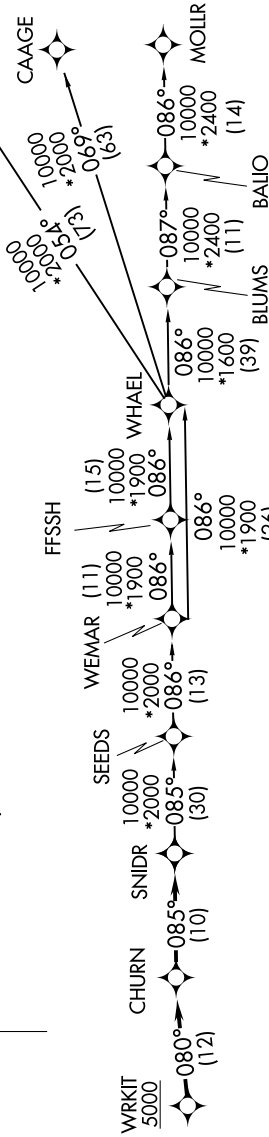
SAN ANTONIO DEP CON
125.1 307.0

RNAV 1 - DME/DME IRU or GPS.
RADAR required.

TOP ALTITUDE:
ASSIGNED BY ATC



TAKEOFF MINIMUMS
 Rwy 17: Standard with minimum climb of 210'/NM to 2200.
 Rwy 35: Standard with minimum climb of 250'/NM to 3800.

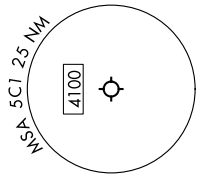


DEPARTURE ROUTE DESCRIPTION

TAKEOFF RUNWAY 17: Climb on heading 169° or as assigned by ATC, for vectors to WRKIT, thence
TAKEOFF RUNWAY 35: Climb on heading 349° or as assigned by ATC, for vectors to WRKIT, thence

. . . . on track 080° to CHURN, then on track 085° to SNIDR, then on transition. Maintain ATC assigned altitude.

- BLUMS TRANSITION (SNIDR1.BLUMS)
- CAAGE TRANSITION (SNIDR1.CAAGE)
- FFSSH TRANSITION (SNIDR1.FFSSH)
- MOLLR TRANSITION (SNIDR1.MOLLR)
- SEEDS TRANSITION (SNIDR1.SEEDS)
- WEMAR TRANSITION (SNIDR1.WEMAR)
- WHAEL TRANSITION (SNIDR1.WHAEL)
- WYLSN TRANSITION (SNIDR1.WYLSN)



Note: Chart not to scale.

SNIDR ONE DEPARTURE (RNAV) (SNIDR1.SNIDR) 25JAN24

SAN ANTONIO, TEXAS
BOERNE STAGE AIRFIELD (5C1)

SC-3, 11 JUL 2024 to 08 AUG 2024