

WAAS CH <b>97508</b> <b>W36A</b>	APP CRS <b>002°</b>	Rwy Idg TDZE <b>25</b> Apt Elev <b>25</b>	<b>3199</b>
--	------------------------	---	-------------

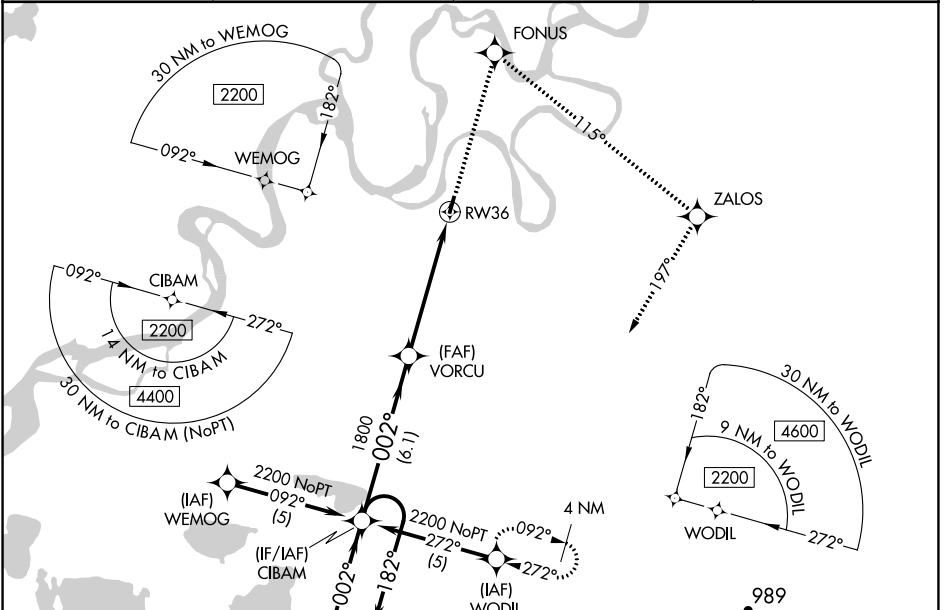
# RNAV (GPS) RWY 36

KWETHLUK (KWT) (PFKW)

**V** Baro-VNAV NA.  
**NA** DME/DME RNP-0.3 NA.  
**W** When local altimeter setting not received use Bethel altimeter setting.  
 Rwy 36 helicopter visibility reduction below ¾ SM NA.

MISSED APPROACH: Climb to 2200 direct FONUS and right turn via 115° track to ZALOS and via 197° track to WODIL and hold.

AWOS-3P <b>120.0</b>	BET/PABE ASOS <b>135.45</b>	ANCHORAGE CENTER <b>125.2 372.0</b>	CTAF <b>122.9 0</b>
-------------------------	--------------------------------	--	------------------------



AK, 11 JUL 2024 to 05 SEP 2024

AK, 11 JUL 2024 to 05 SEP 2024

ELEV 25	TDZE 25
---------	---------

4 NM Holding Pattern at CIBAM: 182° track to 2200 ft, 002° track to 2200 ft.

4 NM Holding Pattern	CIBAM	2200	FONUS	ZALOS	WODIL
		↑	115° tr	197° tr	

VGSI and RNAV glidepath not coincident (VGSI Angle 3.20/TCH 28).

Final Approach Segment: 002° track to 1800 ft, 182° track to RW36, 5.4 NM.

CATEGORY	A	B	C	D
LPV DA	695-2½		670 (700-2½)	
LNAV/VNAV DA	733-2½		708 (800-2½)	
LNAV MDA	620-1	595 (600-1)	620-1½ 595 (600-1½)	620-1¾ 595 (600-1¾)
CIRCLING	680-1	655 (700-1)	680-1¾ 655 (700-1¾)	680-2 655 (700-2)

MIRL Rwy 18-36 0  
REIL Rwy 18 and 36 0