

WAAS CH 58209 W02A	APP CRS 019°	Rwy Idg TDZE 389 Apt Elev 389	5002 389 389
--	------------------------	---	---

RNAV (GPS) RWY 2

SALINE COUNTY RGNL (SUZ)

RNP APCH - GPS.

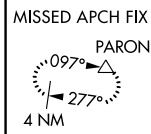
- ▼ Rwy 2 helicopter visibility reduction below 3/4 SM NA.
- ▲ For uncompensated Baro-VNAV systems, LNAV/VNAV NA below -15°C or above 54°C.

MISSED APPROACH: Climb to 2600 direct NIKIC and track 290° to PARON and hold.

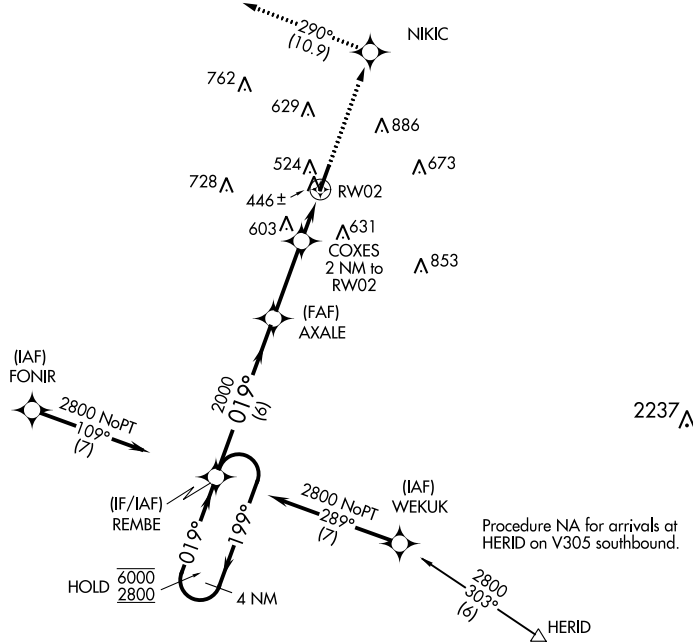
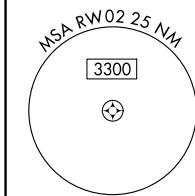
AWOS-3
132.125

LITTLE ROCK APP CON
119.5 306.2

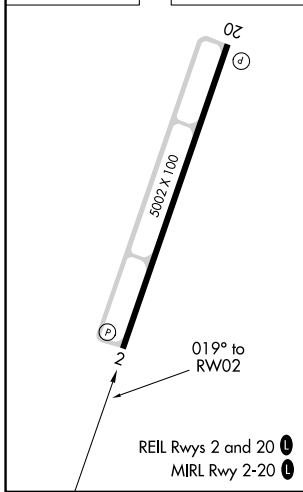
UNICOM
122.8 (CTAF) 0



Procedure NA for arrival on HOT VOR/DME airway radials 071 CW 163.



ELEV 389	TDZE 389
----------	----------



CATEGORY	A	B	C	D
LPV DA		639-3/4	250 (300-3/4)	
LNAV/VNAV DA		670-7/8	281 (300-7/8)	
LNAV MDA	820-1	431 (500-1)	820-1 1/4	431 (500-1 1/4)
CIRCLING	940-1 551 (600-1)	1080-1 691 (700-1)	1200-2 1/2 811 (900-2 1/2)	1200-2 3/4 811 (900-2 3/4)