

APP CRS 322°	Rwy Idg 5125
	TDZE 20
	Apt Elev 20

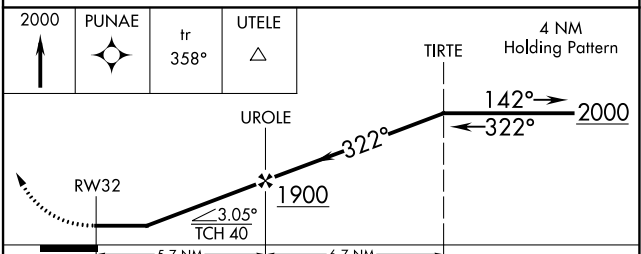
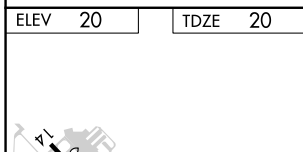
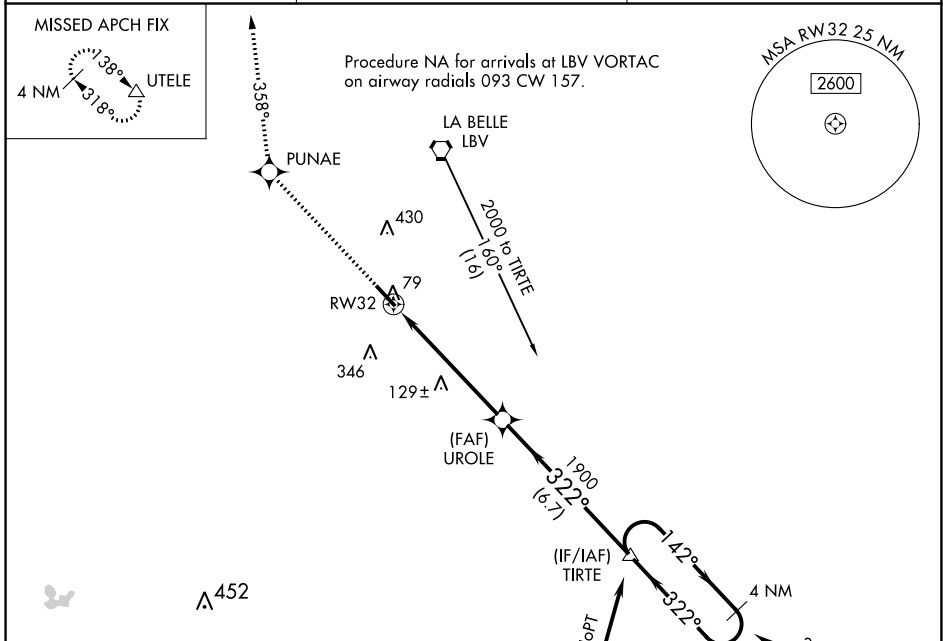
RNAV (GPS) RWY 32

LA BELLE MUNI (X14)

NA DME/DME RNP-0.3 NA. Helicopter visibility reduction below $\frac{3}{4}$ SM NA. Use Southwest Florida Intl altimeter setting; when not received, use Page Fld altimeter setting and increase all MDAs 20 feet.

MISSED APPROACH: Climb to 2000 direct PUNAE then via 358° track to UTELE and hold.

RSW ASOS 124.65	FORT MYERS APP CON 126.8	UNICOM 122.8 (CTAF) 0
---------------------------	------------------------------------	----------------------------------------



CATEGORY	A	B	C	D
LNNAV MDA	480-1	460 (500-1)	480-1½ 460 (500-1¼)	480-1½ 460 (500-1½)
CIRCLING	580-1	560 (600-1)	800-2¼ 780 (800-2¼)	800-2½ 780 (800-2½)

SE-3, 11 JUL 2024 to 08 AUG 2024

SE-3, 11 JUL 2024 to 08 AUG 2024