

| | | |
|--|------------------------|---|
| WAAS CH 72727 W25A | APP CRS 247° | Rwy Idg 5500 TDZE 595 Apt Elev 595 |
|--|------------------------|---|

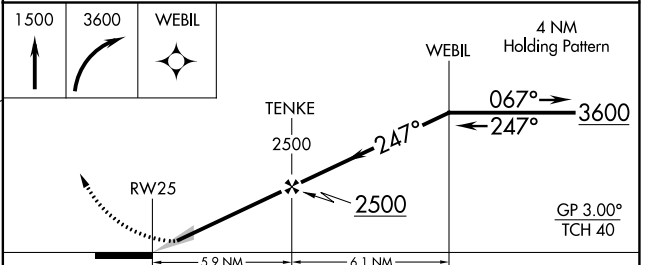
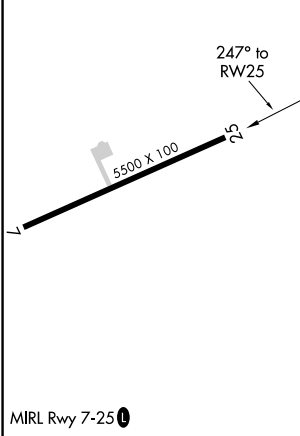
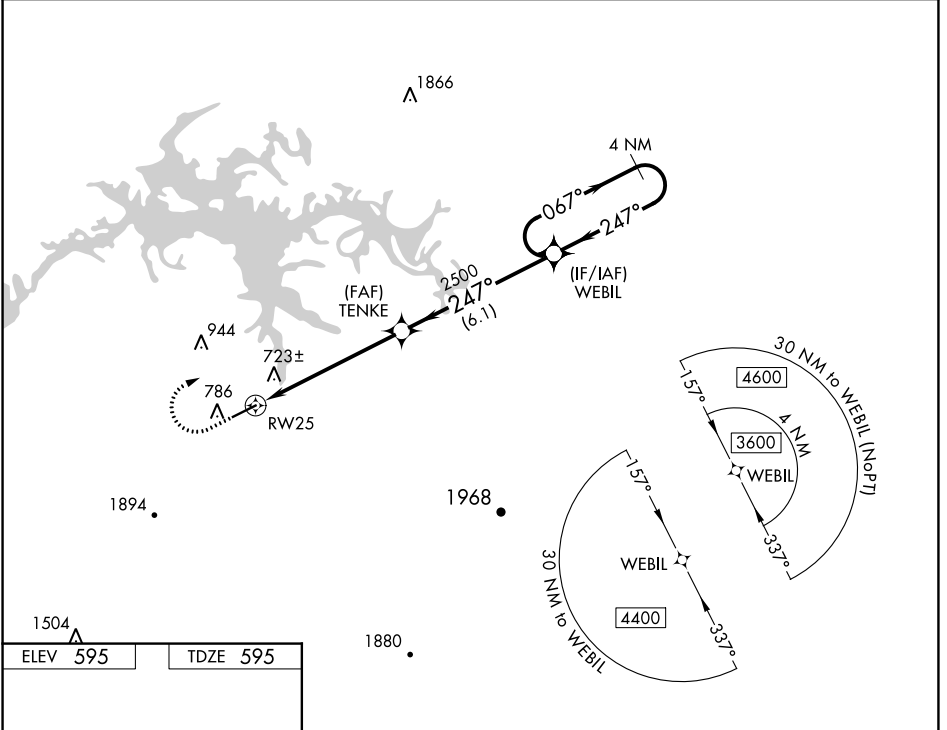
RNAV (GPS) RWY 25

CENTRE-PIEDMONT CHEROKEE COUNTY RGNL (PYP)

NA Baro-VNAV NA. DME/DME RNP-0.3 NA. Use Gadsden altimeter setting, when not received, use Anniston altimeter setting and increase all DA/MDA 20 feet.

MISSED APPROACH: Climb to 1500 then climbing right turn to 3600 direct WEBIL and hold.

| | | |
|--------------------------------|--|----------------------|
| GAD AWOS-3PT 127.825 | ATLANTA CENTER 124.5 270.325 | CTAF 122.9 |
|--------------------------------|--|----------------------|



| CATEGORY | A | B | C | D |
|--------------|--------------------|---|----------------------------|----------------------|
| LPV DA | 856-7/8 | | 261 (300-7/8) | |
| LNAV/VNAV DA | 1064-1 5/8 | | 469 (500-1 5/8) | |
| LNAV MDA | 1180-1 585 (600-1) | | 1180-1 3/4 585 (600-1 3/4) | |
| CIRCLING | 1180-1 585 (600-1) | | 1360-2 1/4 765 (800-2 1/4) | 2260-3 1665 (1700-3) |

SE-4, 11 JUL 2024 to 08 AUG 2024

SE-4, 11 JUL 2024 to 08 AUG 2024