

APP CRS	Rwy Idg	<b>4000</b>
<b>029°</b>	TDZE	<b>572</b>
	Apt Elev	<b>574</b>

# RNAV (GPS) RWY 4

VENETIE (VEE) (PAVE)

RNP APCH-GPS.

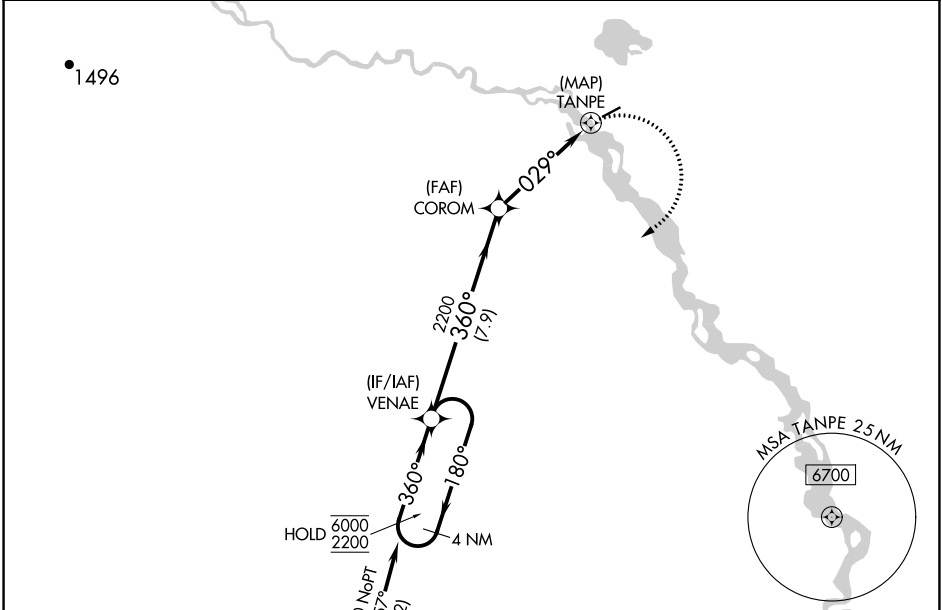
**NA** Rwy 4 helicopter visibility reduction below 1 SM NA. Use Fort Yukon altimeter setting. Procedure NA at night.

MISSED APPROACH: Climbing right turn to 2200, direct VENAE and hold.

FYU/PFYU AWOS-3P  
**125.8**

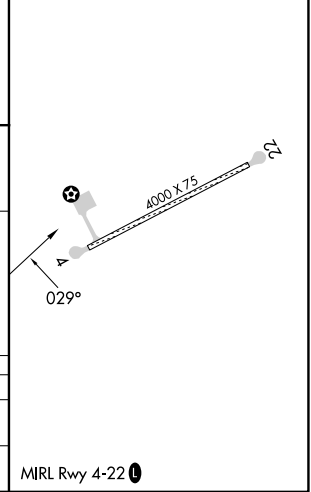
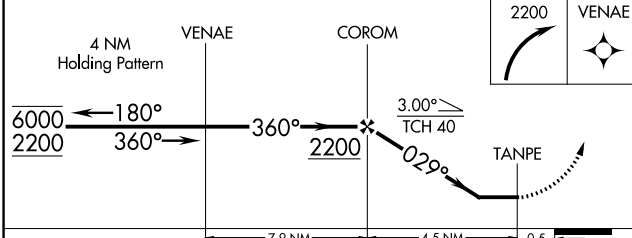
ANCHORAGE CENTER  
**135.0 225.4**

CTAF  
**122.9**



Procedure NA for arrivals at CURUP on airways B4 westbound and T273 southbound.

ELEV 574	TDZE 572
----------	----------



CATEGORY	A	B	C	D
LNVA MDA	1220-1	648 (700-1)	1220-1 $\frac{7}{8}$	648 (700-1 $\frac{7}{8}$ )
<b>C</b> CIRCLING	1220-1	646 (700-1)	1220-1 $\frac{7}{8}$ 646 (700-1 $\frac{7}{8}$ )	1260-2 $\frac{1}{4}$ 686 (700-2 $\frac{1}{4}$ )

AK, 11 JUL 2024 to 05 SEP 2024

AK, 11 JUL 2024 to 05 SEP 2024