

APP CRS <b>249°</b>	Rwy Idg TDZE Apt Elev	<b>3050</b> <b>1755</b> <b>1755</b>
------------------------	-----------------------------	---

# RNAV (GPS) RWY 26

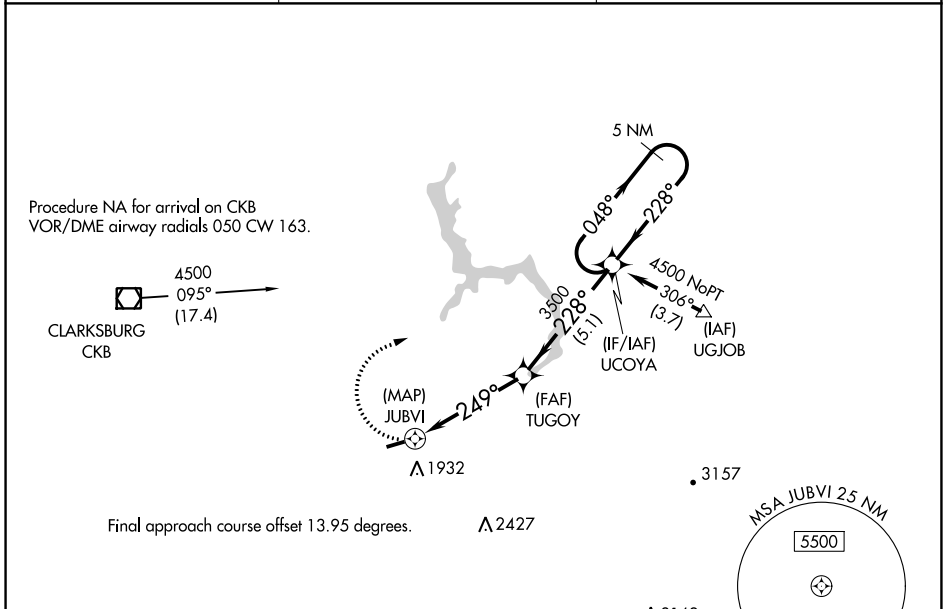
PHILIPPI/BARBOUR COUNTY RGNL (79D)

**▼** Rwy 26 helicopter visibility reduction below 1 SM NA.  
DME/DME RNP-0.3 NA. Procedure NA at night.

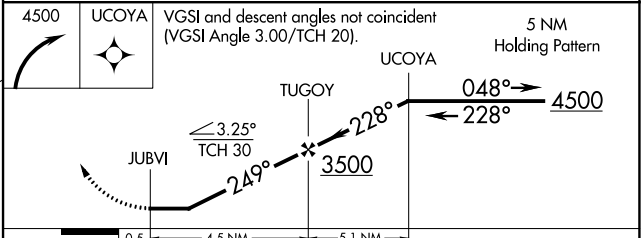
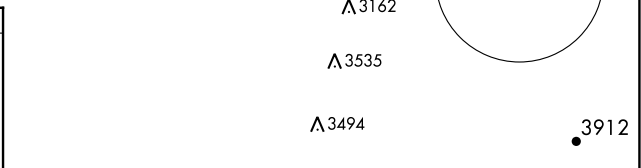
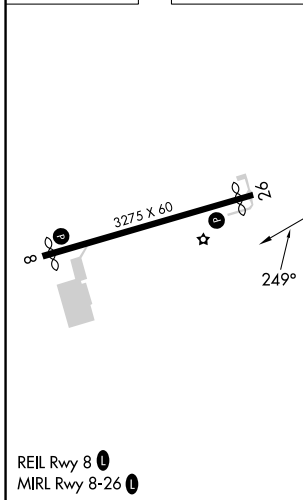
**▲ NA** Use Clarksburg altimeter setting, when not received,  
use Buckhannon altimeter setting.

MISSED APPROACH: Climbing right  
turn to 4500 direct UCOYA and hold.

CKB ASOS <b>127.825</b>	CLARKSBURG APP CON ★ <b>121.15 284.65</b>	CTAF <b>122.9 0</b>
----------------------------	--	------------------------



ELEV 1755	TDZE 1755
-----------	-----------



CATEGORY	A	B	C	D
LNAV MDA	2460-1	705 (800-1)	NA	
<b>C</b> CIRCLING	2520-1 765 (800-1)	2520-1¼ 765 (800-1¼)	NA	

NE-4, 11 JUL 2024 to 08 AUG 2024

NE-4, 11 JUL 2024 to 08 AUG 2024