

# COPTER RNAV (GPS) Y RWY 9 GREENE COUNTY (WAY)

APP CRS	Rwy Idg	<b>3500</b>
<b>088°</b>	TDZE	<b>1069</b>
	Apt Elev	<b>1069</b>

RNP APCH - GPS.

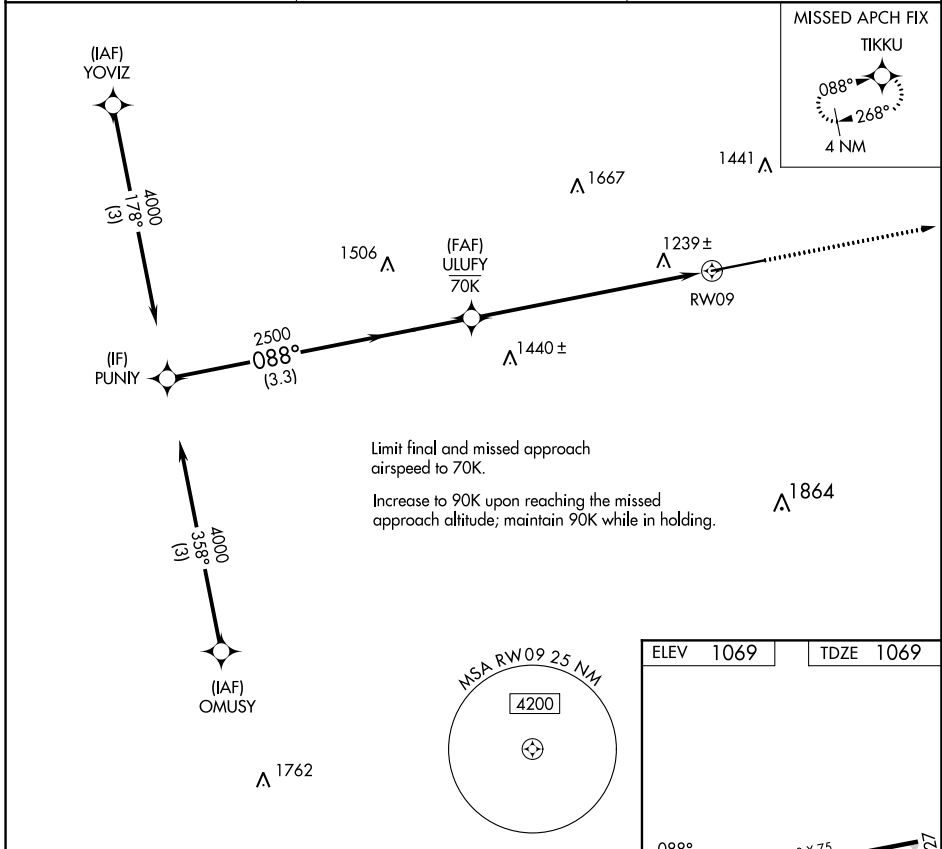
**NA** Use Washington altimeter setting. Procedure NA at night.

MISSED APPROACH: Climb to 4000 direct TIKKU and hold, continue climb-in-hold to 4000.

AFJ AWOS-3PT  
**119.175**

CLARKSBURG APP CON\*  
**121.15 284.65**

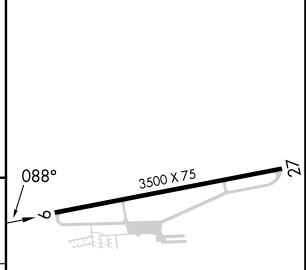
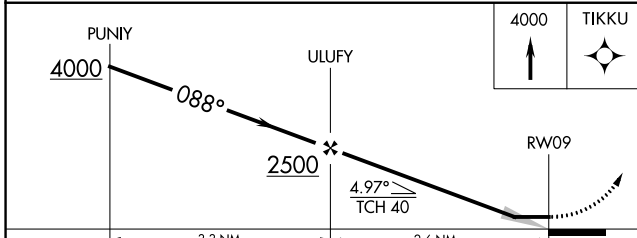
UNICOM  
**122.8 (CTAF)**



NE-4, 11 JUL 2024 to 08 AUG 2024

NE-4, 11 JUL 2024 to 08 AUG 2024

ELEV 1069	TDZE 1069
-----------	-----------



CATEGORY	COPTER	
LNAV MDA	1560-1	491 (500-1)