

LOC/DME I-BBG 111.35 Chan 50 (Y)	APP CRS 323°	Rwy Idg 7140 TDZE 1302 Apt Elev 1302
---	------------------------	---

ILS or LOC RWY 32

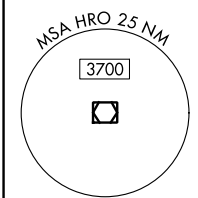
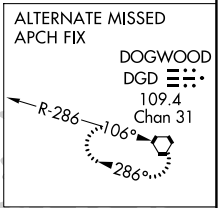
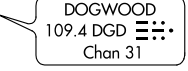
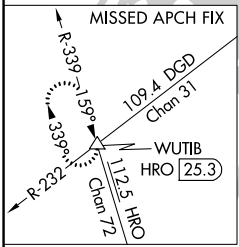
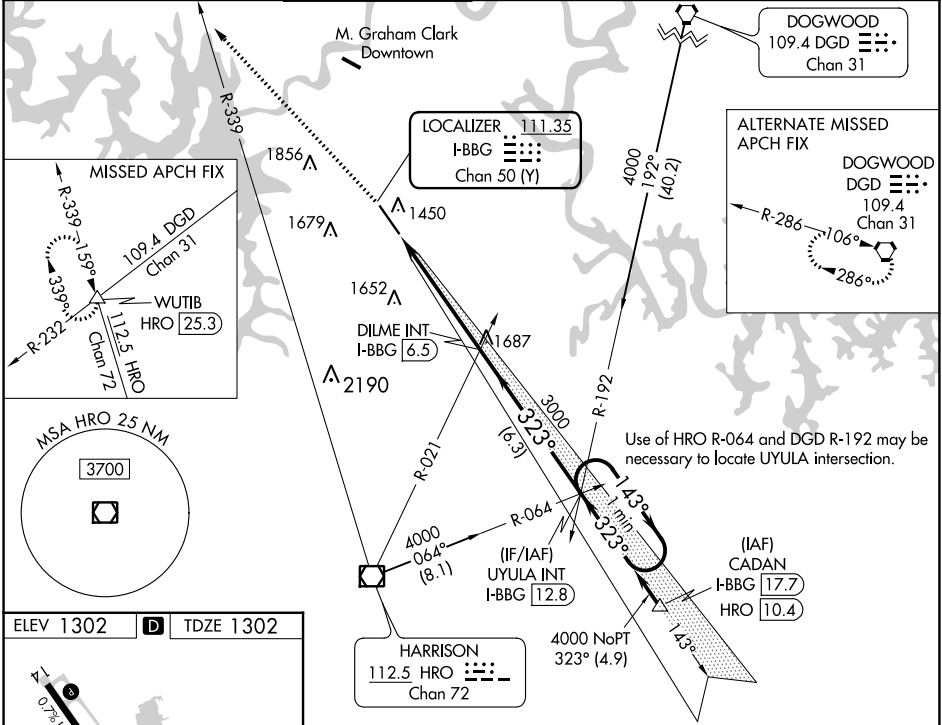
BRANSON (BBG)

NA Inop table does not apply. When local altimeter setting not received, use Harrison altimeter setting and increase S-ILS 32 DA to 1549 feet; increase all MDAs 60 feet and S-LOC 32 visibility Cat C/D and Circling visibility Cat C ¼ SM. VDP NA when using Harrison altimeter setting.

MALSF

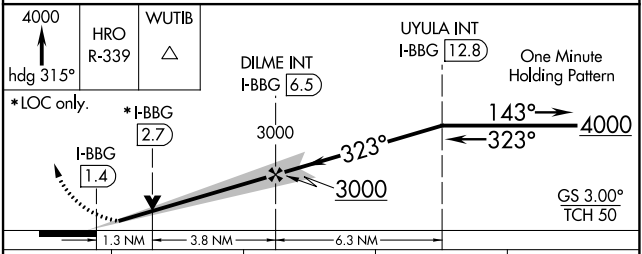
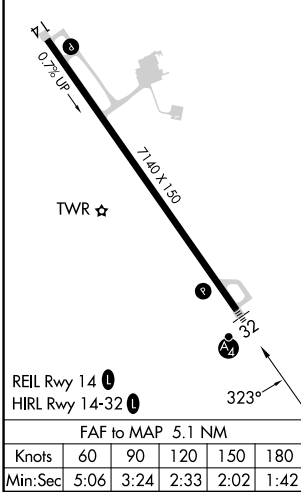
MISSED APPROACH: Climb to 4000 on heading 315° and HRO VOR/DME R-339 to WUTIB INT/HRO 25.3 DME and hold.

ATIS 124.625	SPRINGFIELD APP CON 126.35	BRANSON TOWER★ 128.15 (CTAF)	GND CON 118.4	CLNC DEL 118.4	SPRINGFIELD CLNC DEL 126.35 (When tower closed)	UNICOM 122.95
------------------------	--------------------------------------	--	-------------------------	--------------------------	--	-------------------------



Use of HRO R-064 and DGD R-192 may be necessary to locate UYULA intersection.

ELEV 1302	D	TDZE 1302
-----------	----------	-----------



CATEGORY	A	B	C	D
S-ILS 32		1502-1	200 (200-1)	
S-LOC 32		1760-1	458 (500-1)	
C CIRCLING	1760-1 458 (500-1)	1900-1 598 (600-1)	2220-2¾ 918 (1000-2¾)	2220-3 918 (1000-3)

NC-3, 11 JUL 2024 to 08 AUG 2024

NC-3, 11 JUL 2024 to 08 AUG 2024