

WAAS CH 87138 W13A	APP CRS 134°	Rwy Idg 4201 TDZE 1318 Apt Elev 1318
--	------------------------	---

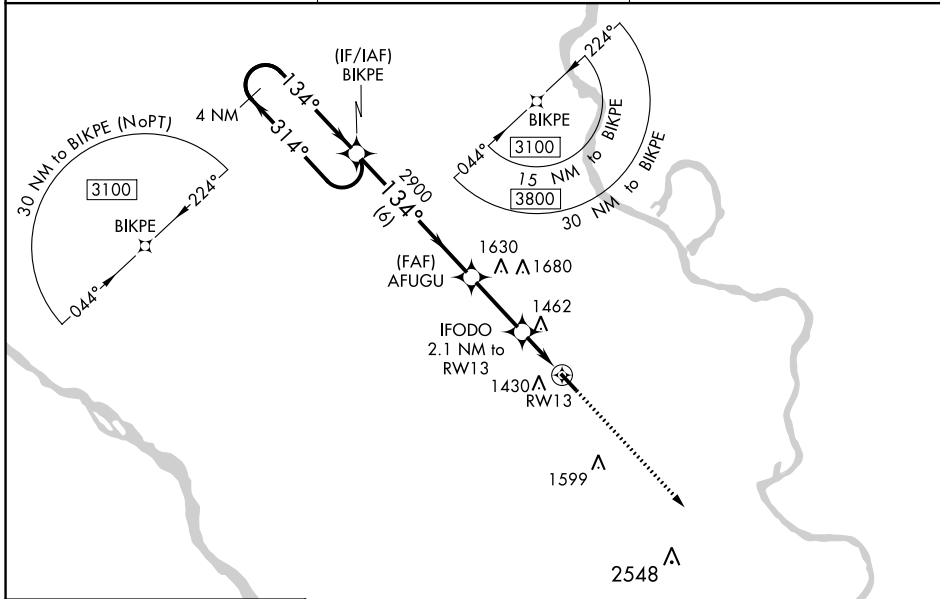
RNAV (GPS) RWY 13

BLAIR EXEC (BTA)

⚠ For uncompensated Baro-VNAV systems, LNAV/VNAV NA below -17°C (2°F) or above 54°C (130°F). Baro-VNAV and VDP NA when using Eppley Airfield altimeter setting.
⚠ DME/DME RNP-0.3 NA. Helicopter visibility reduction below 3/4 SM NA. When local altimeter setting not received, use Eppley Airfield altimeter setting and increase LPV and LNAV/VNAV DA to 1642 and visibility to 1 1/8 mile all Cats, increase all MDA 80 feet and LNAV Cat C visibility to 1 3/8 mile.

MISSED APPROACH: Climb to 4000 direct FALUK and hold.

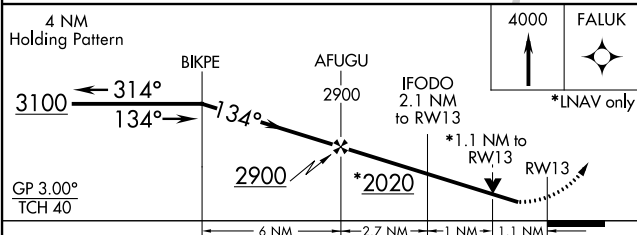
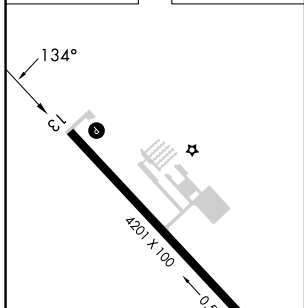
AWOS-3 120.225	OMAHA APP CON 120.1 354.05	UNICOM 123.05 (CTAF) 0
--------------------------	--------------------------------------	----------------------------------



NC-2, 11 JUL 2024 to 08 AUG 2024

NC-2, 11 JUL 2024 to 08 AUG 2024

ELEV 1318	TDZE 1318
-----------	-----------



CATEGORY	A	B	C	D
LPV DA	1568-7/8	250 (300-7/8)		NA
LNAV/VNAV DA	1568-7/8	250 (300-7/8)		NA
LNAV MDA	1720-1	402 (500-1)	1720-1 1/8 402 (500-1 1/8)	NA
C CIRCLING	1740-1 422 (500-1)	1780-1 462 (500-1)	1780-2 462 (500-1)	NA