

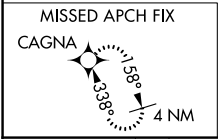
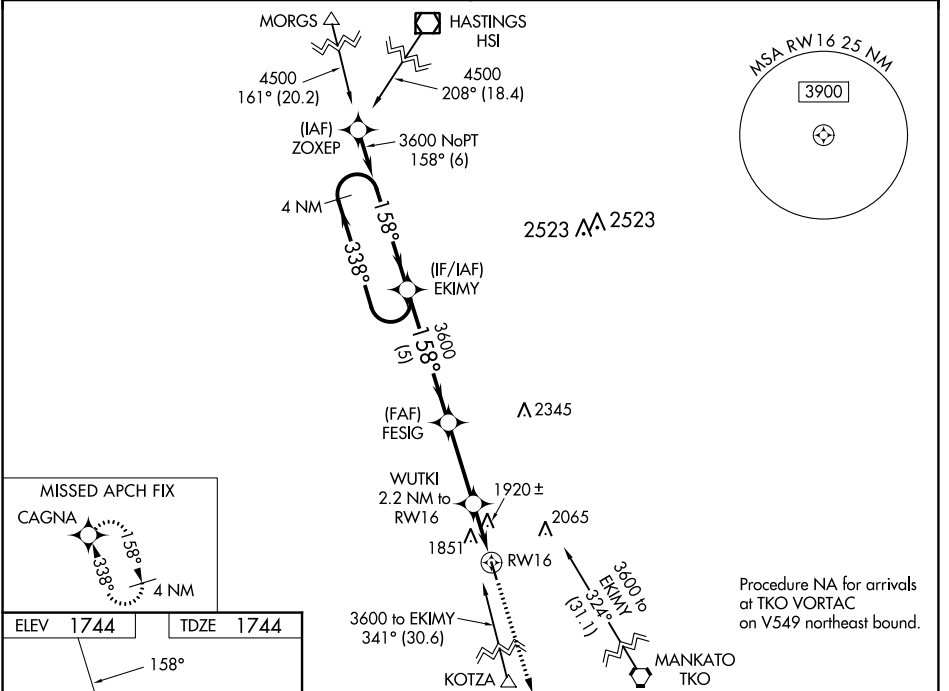
WAAS CH <b>82027</b> <b>W16A</b>	APP CRS <b>158°</b>	Rwy Idg TDZE <b>1744</b> Apt Elev <b>1744</b>	<b>3702</b>
--	------------------------	---	-------------

# RNAV (GPS) RWY 16

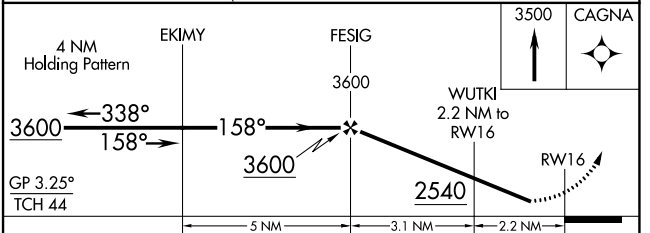
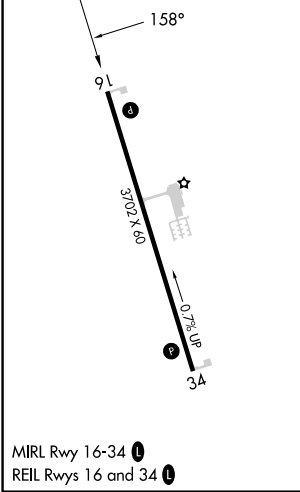
RED CLOUD MUNI (7V7)

RNP APCH - GPS.	<p>Baro-VNAV NA. Use Smith Center altimeter setting, when not received use Hastings altimeter setting and increase all DA 44 feet and all MDA 60 feet; increase LPV Cats A/B visibility 1/8 mile and LNAV/VNAV Cats A/B visibility 1/4 mile. Rwy 16 helicopter visibility reduction below 3/4 SM NA.</p>	<p>MISSED APPROACH: Climb to 3500 direct CAGNA and hold.</p>
<p>NA</p>		

MINNEAPOLIS CENTER <b>119.4 278.8</b>	CTAF <b>122.9</b>
--	----------------------



ELEV <b>1744</b>	TDZE <b>1744</b>
------------------	------------------



CATEGORY	A	B	C	D
LPV DA	2075-1	331 (400-1)		NA
LNAV/VNAV DA	2198-1 3/8	454 (500-1 3/8)		NA
LNAV MDA	2240-1	496 (500-1)		NA
CIRCLING	2280-1 536 (600-1)	2300-1 556 (600-1)		NA

NC-2, 11 JUL 2024 to 08 AUG 2024

NC-2, 11 JUL 2024 to 08 AUG 2024