

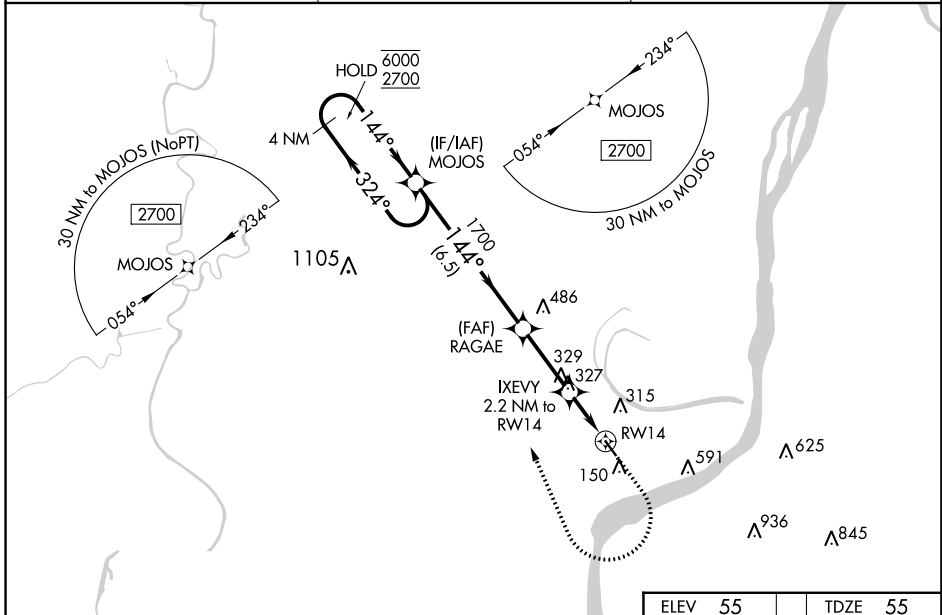
WAAS CH 78337 W14A	APP CRS 144°	Rwy Idg TDZE Apt Elev	3701 55 55
----------------------------------------	------------------------	-----------------------------	---------------------------------------

RNAV (GPS) RWY 14

CONCORDIA PARISH (ØR4)

RNP APCH - GPS.	MISSED APPROACH: Climb to 1000 then climbing right turn to 3000 direct MOJOS and hold.
⚠ Rwy 14 helicopter visibility reduction below ¼ SM NA. For uncompensated Baro-VNAV systems, LNAV/VNAV NA below -15°C or above 54°C. When local altimeter setting not received, use Natchez altimeter setting and increase LPV DA to 408 feet; increase LNAV/VNAV DA to 540 feet and all visibilities ½ SM; increase all MDAs 60 feet and LNAV visibility Cat C ¼ SM, and Circling visibility Cat C ¼ SM. Baro-VNAV and VDP NA when using Natchez altimeter setting.	

AWOS-3 118.2	HOUSTON CENTER 120.975 299.6	UNICOM 122.8 (CTAF) 0
------------------------	----------------------------------------	---------------------------------



SC-4, 11 JUL 2024 to 08 AUG 2024

SC-4, 11 JUL 2024 to 08 AUG 2024

4 NM Holding Pattern		ELEV 55	TDZE 55	
MOJOS 6000 ← 324° 2700 → 144° GP 3.00° TCH 51		1000 3000 MOJOS	RAGAE 1700 IXEVY 2.2 NM to RW14 1.5 NM to RW14 RW14	
6.5 NM 2.8 NM 0.7 NM 1.5 NM		144° 3701 x 75 32		
CATEGORY	A	B	C	D
LPV DA	352-1 297 (300-1)			NA
LNAV/VNAV DA	484-1¼ 429 (500-1¼)			NA
LNAV MDA	580-1	525 (600-1)	580-1½ 525 (600-1½)	NA
CIRCLING	680-1	625 (700-1)	960-2¾ 905 (1000-2¾)	NA
		MIRL Rwy 14-32 0		REIL Rwy 14 and 32 0