

APP CRS	Rwy Idg	<b>3701</b>
<b>339°</b>	TDZE	<b>55</b>
	Apt Elev	<b>55</b>

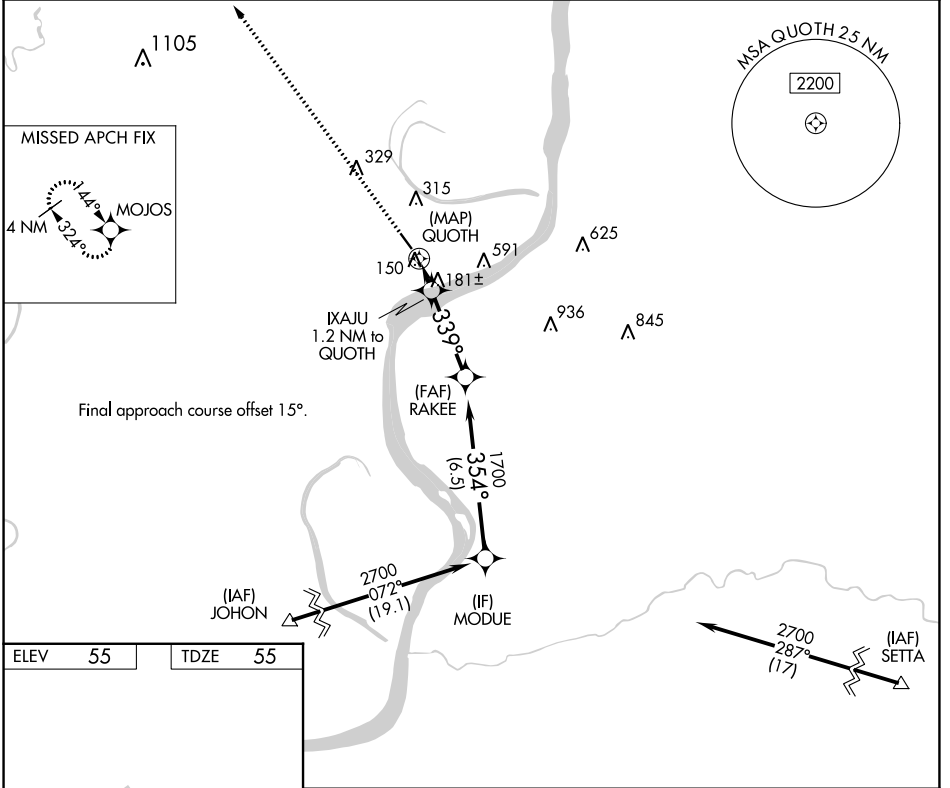
# RNAV (GPS) RWY 32

CONCORDIA PARISH (ØR4)

**NA** DME/DME RNP-0.3 NA. Use Natchez altimeter setting; when not received, use Esler Rgnl altimeter setting and increase all MDA 60 feet and Circling Cat C visibility ¼ mile. Helicopter visibility reduction below ¾ SM NA.

MISSED APPROACH: Climb to 2700 direct MOJOS and hold.

AWOS-3 <b>118.2</b>	HOUSTON CENTER <b>120.975 299.6</b>	UNICOM <b>122.8 (CTAF) 0</b>
------------------------	--	---------------------------------



ELEV	55	TDZE	55
------	----	------	----

REIL Rwy 14 and 32 **0**  
MIRL Rwy 14-32 **0**

2700	MOJOS				
					MODUE
	QUOTH	IXAJU 1.2 NM to QUOTH	RAKEE	1700	2700
		640	339°	354°	
			≤3.00° TCH 50		
	0.5	1.2 NM	3.3 NM	6.5 NM	
CATEGORY	A	B	C	D	
LNAV MDA	500-1	445 (500-1)	500-1 3/8 445 (500-1 3/8)	NA	
<b>C</b> CIRCLING	680-1	625 (700-1)	960-2 3/4 905 (1000-2 3/4)	NA	

SC-4, 11 JUL 2024 to 08 AUG 2024

SC-4, 11 JUL 2024 to 08 AUG 2024