

WAAS CH 62928 W28A	APP CRS 280°	Rwy Idg TDZE 928 Apt Elev 928	4549
--	------------------------	---	-------------

RNAV (GPS) RWY 28

BOGGS FLD (USW)

RNP APCH.

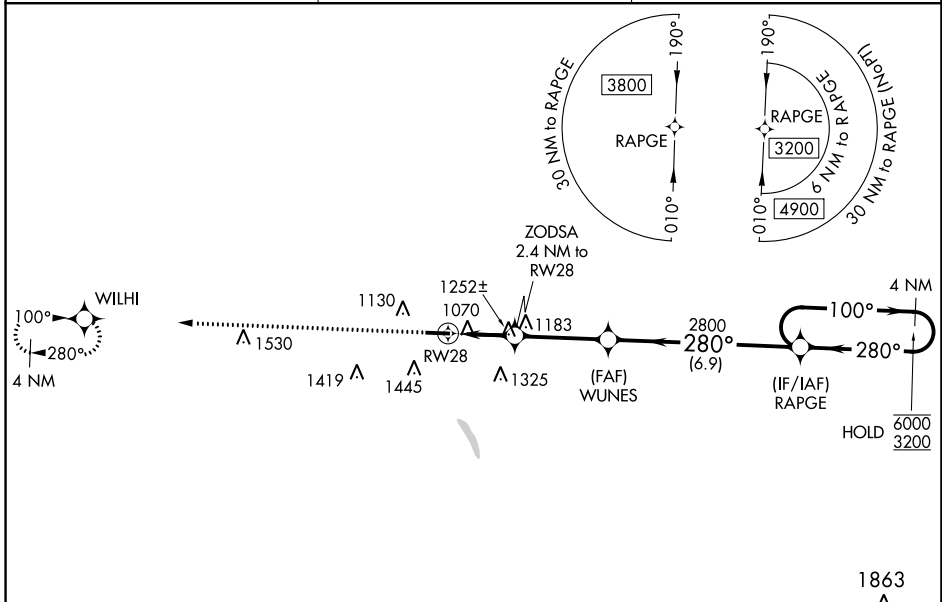
▼ Rwy 28 helicopter visibility reduction below 1 SM NA. Rwy 28 Straight-in and Circling minimums NA at night. When local altimeter setting not received, use Charleston altimeter setting and increase all MDA's 80 feet, LP and LNAV Cats C and D visibility $\frac{1}{8}$ SM and Circling Cats C and D visibility $\frac{1}{4}$ SM. *1780 when using Charleston altimeter setting.

MISSED APPROACH:
Climb to 3500 direct WILHI and hold.

AWOS-3
118.575

CHARLESTON APP CON
124.1 269.125

UNICOM
122.725 (CTAF) 0



ELEV 928	TDZE 928
----------	----------

		Visual Segment - Obstacles.		
3500 WILHI		WUNES		
ZODSA 2.4 NM to RWY 28		RAPGE 4 NM Holding Pattern		
RWY 28 1720*		2800		
2.4 NM		3.4 NM		
6.9 NM		100° 280°		
CATEGORY	A	B	C	D
LP MDA	1520-1	592 (600-1)	1520-1 $\frac{3}{4}$	592 (600-1 $\frac{3}{4}$)
LNAV MDA	1520-1	592 (600-1)	1520-1 $\frac{3}{4}$	592 (600-1 $\frac{3}{4}$)
CIRCLING	1560-1	1760-1 $\frac{1}{4}$	1760-2 $\frac{1}{2}$	1760-2 $\frac{3}{4}$
	632 (700-1)	832 (900-1 $\frac{1}{4}$)	832 (900-2 $\frac{1}{2}$)	832 (900-2 $\frac{3}{4}$)

NE-4, 11 JUL 2024 to 08 AUG 2024

NE-4, 11 JUL 2024 to 08 AUG 2024