

WAAS CH <b>53731</b> <b>W32A</b>	APP CRS <b>319°</b>	Rwy Idg <b>3401</b>
		TDZE <b>1206</b>
		Apt Elev <b>1206</b>

# RNAV (GPS) RWY 32

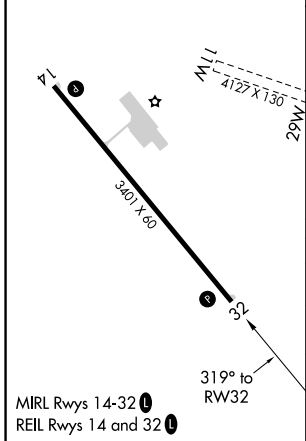
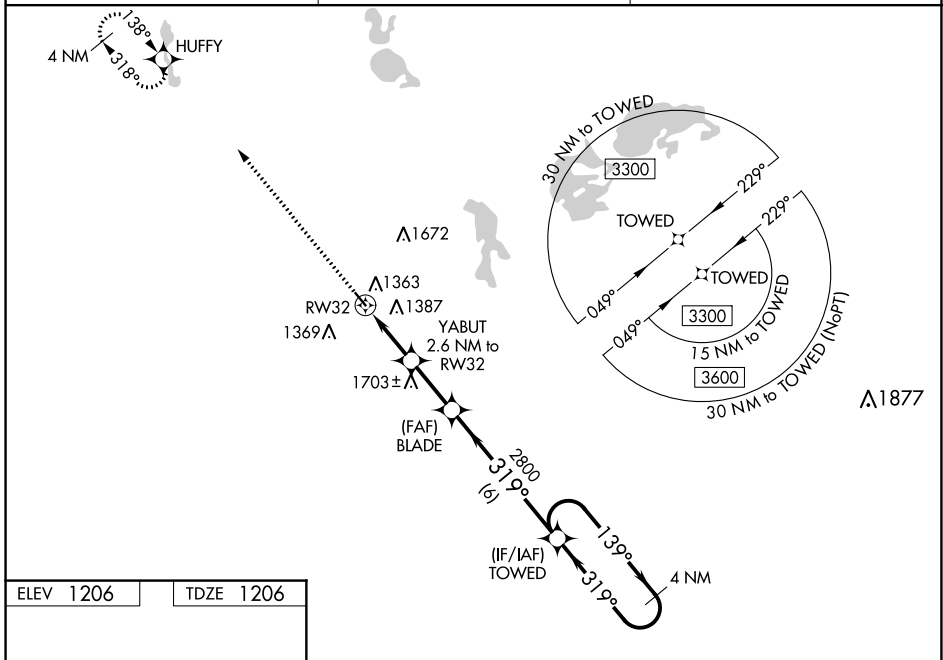
ELBOW LAKE MUNI/PRIDE OF THE PRAIRIE (Y63)

RNP APCH-GPS.

**⚠ NA** Baro-VNAV NA when using Fergus Falls altimeter setting. For uncompensated Baro-VNAV systems, LNAV/VNAV NA below -17°C or above 54°C. Circling NA northeast of Rwy 14-32. Procedure NA at night. When local altimeter setting not received, use Fergus Falls altimeter setting: increase LPV DA to 1504 feet; increase LNAV/VNAV DA to 1643 feet and visibility all Cats ½ mile; increase all MDAs 60 feet. Circling NA to Rwy's 11W and 29W.

MISSED APPROACH: Climb to 3300 direct HUFFY and hold.

AWOS-3 <b>118.075</b>	MINNEAPOLIS CENTER <b>126.1 269.2</b>	CTAF <b>122.9</b>
--------------------------	--	----------------------



3300	HUFFY	VGSI and RNAV glidepath not coincident (VGSI Angle 3.00/TCH 26).	4 NM Holding Pattern
	YABUT 2.6 NM to RWY 32	BLADE 2800	319°
	RWY 32	2060*	2800
	2.6 NM	2.3 NM	6 NM
CATEGORY	A	B	C
LPV DA	1456-1	250 (300-1)	NA
LNAV/VNAV DA	1595-1 <sup>3</sup> / <sub>8</sub>	389 (400-1 <sup>3</sup> / <sub>8</sub> )	NA
LNAV MDA	1580-1	374 (400-1)	NA
CIRCLING	1600-1 394 (400-1)	1680-1 474 (500-1)	NA

NC-1, 11 JUL 2024 to 08 AUG 2024

NC-1, 11 JUL 2024 to 08 AUG 2024