

APP CRS	Rwy Idg	3600
150°	TDZE	1417
	Apt Elev	1418

RNAV (GPS) RWY 15

PARKSTON MUNI (8V3)

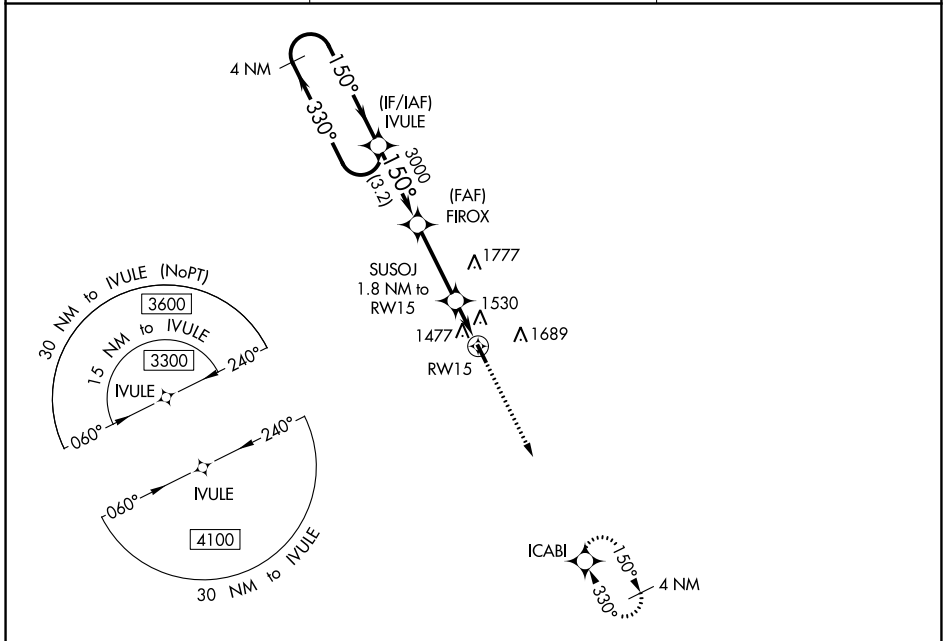
NA DME/DME RNP-0.3 NA. Use Mitchell altimeter setting; when not received, use Yankton altimeter setting and increase all MDA 40 feet. Helicopter visibility reduction below 3/4 SM not authorized.

MISSED APPROACH: Climb to 3300 direct ICABI and hold.

MHE ASOS
124.175

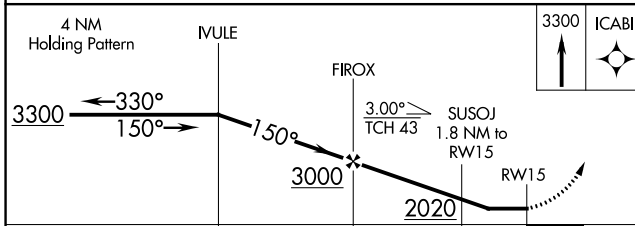
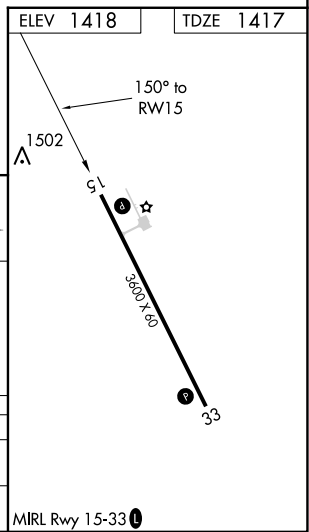
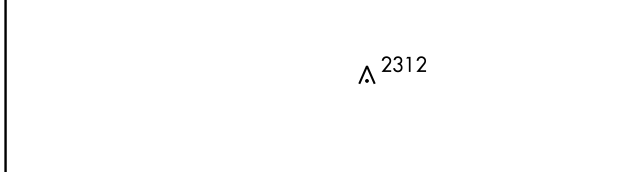
MINNEAPOLIS CENTER
128.0 385.5

AUNICOM
122.9 (CTAF)



NC-1, 11 JUL 2024 to 08 AUG 2024

NC-1, 11 JUL 2024 to 08 AUG 2024



CATEGORY	A	B	C	D
LNAV MDA	1860-1	443 (500-1)		NA
CIRCLING	1980-1 562 (600-1)	2060-1 642 (700-1)		NA