

WAAS CH 86839 W35A	APP CRS 350°	Rwy Idg TDZE Apt Elev	4500 2082 2086
--	------------------------	-----------------------------	---

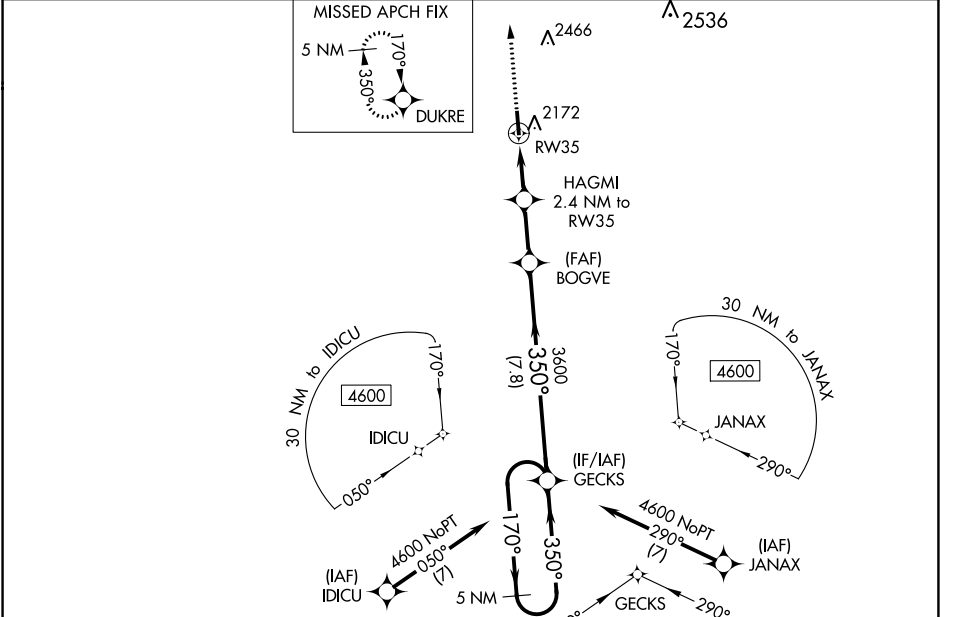
RNAV (GPS) RWY 35

COMANCHE COUNTY (3K8)

⚠ Baro-VNAV NA when using Pratt altimeter setting. DME/DME RNP-0.3 NA. Rwy 35 Helicopter visibility reduction below $\frac{3}{4}$ SM NA. When local altimeter setting not received, use Pratt altimeter setting and increase LPV DA to 2554 and LNAV/VNAV DA to 2572 and all MDA 120 feet; increase LPV all Cats visibility $\frac{1}{8}$ SM, LNAV/VNAV all Cats visibility $\frac{1}{8}$ SM, LNAV Cat C visibility $\frac{1}{4}$ SM, and increase Circling Cat C visibility $\frac{1}{2}$ SM.

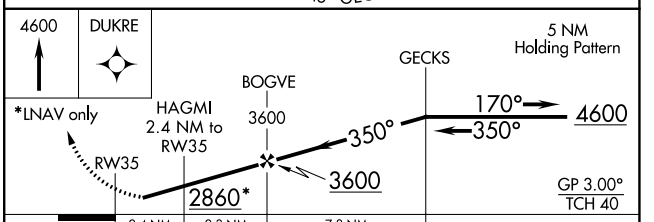
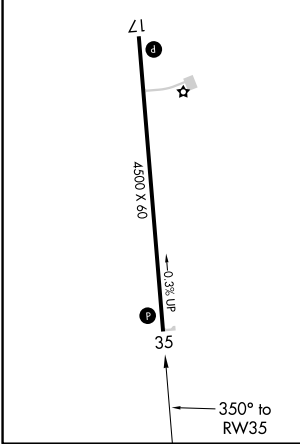
⚠ MISSED APPROACH: Climb to 4600 direct DUKRE and hold.

AWOS-3PT 118.05	KANSAS CITY CENTER 126.95 379.2	CTAF 122.9 0
---------------------------	---	-------------------------------



ELEV 2086	TDZE 2082
------------------	------------------

REIL Rws 17 and 35 **L**
MIRL Rwy 17-35 **L**



CATEGORY	A	B	C	D
LPV DA	2443-1 $\frac{1}{4}$	361 (400-1 $\frac{1}{4}$)		NA
LNAV/VNAV DA	2461-1 $\frac{1}{4}$	379 (400-1 $\frac{1}{4}$)		NA
LNAV MDA	2540-1	458 (500-1)	2540-1 $\frac{3}{8}$ 458 (500-1 $\frac{3}{8}$)	NA
C CIRCLING	2620-1	534 (600-1)	2940-2 $\frac{1}{2}$ 854 (900-2 $\frac{1}{2}$)	NA

RNAV (GPS) RWY 35

COMANCHE COUNTY (3K8)

NC-2, 11 JUL 2024 to 08 AUG 2024

NC-2, 11 JUL 2024 to 08 AUG 2024