

| | | |
|--|------------------------|---|
| WAAS CH 87122 W36A | APP CRS 358° | Rwy Idg 4001 TDZE 284 Apt Elev 285 |
|--|------------------------|---|

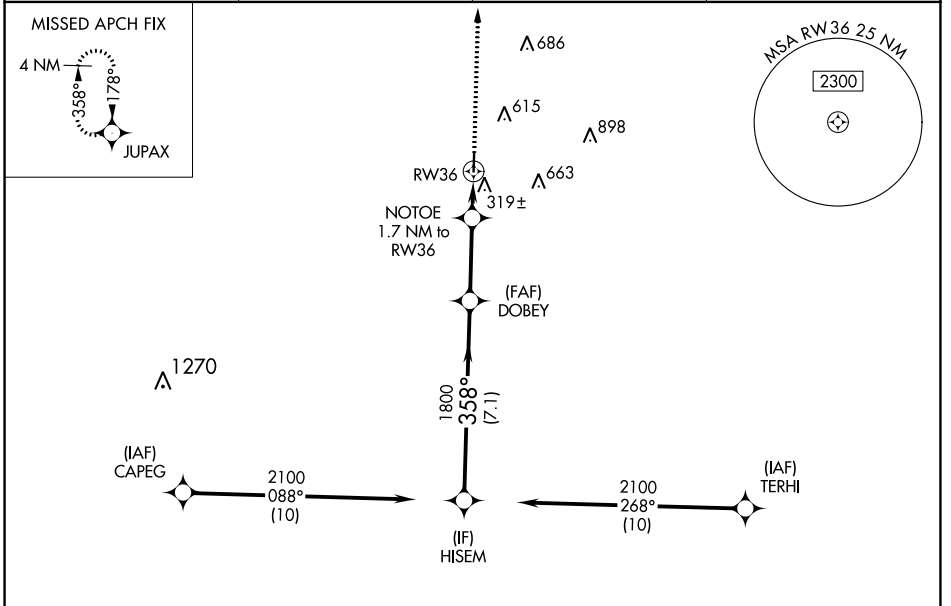
RNAV (GPS) RWY 36

HEARNE MUNI (LHB)

⚠ For uncompensated Baro-VNAV systems, LNAV/VNAV NA below -15°C (5°F) or above 54°C (130°F). DME/DME RNP-0.3 NA. When local altimeter setting not received, use College Station altimeter setting and increase all DA 55 feet and all MDA 60 feet. Increase LPV, LNAV/VNAV all Cats and LNAV Cat C visibility ½ mile. Increase Circling Cat C visibility ¼ mile. Baro-VNAV and VDP NA when using College Station altimeter setting.

MISSED APPROACH: Climb to 2600 direct JUPAX and hold.

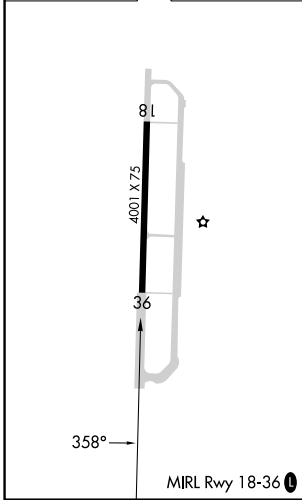
| | | | |
|--------------------------|--|----------------------|-----------------------|
| AWOS-3 118.675 | HOUSTON APP CON 134.3 360.85 | CTAF 122.9 | 123.3 0 |
|--------------------------|--|----------------------|-----------------------|



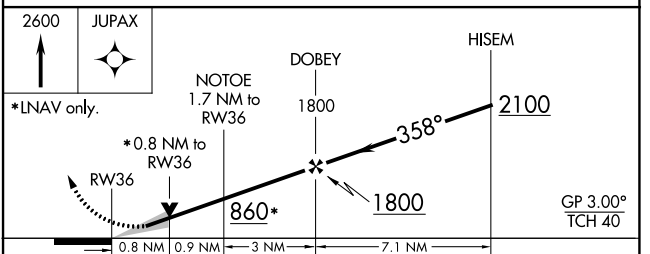
SC-5, 11 JUL 2024 to 08 AUG 2024

SC-5, 11 JUL 2024 to 08 AUG 2024

| | |
|----------|----------|
| ELEV 285 | TDZE 284 |
|----------|----------|



RADAR REQUIRED



| CATEGORY | A | B | C | D |
|--------------|----------------------------------|---|---|----|
| LPV DA | 484- ³ / ₄ | 200 (200- ³ / ₄) | | NA |
| LNAV/VNAV DA | 534- ⁷ / ₈ | 250 (300- ⁷ / ₈) | | NA |
| LNAV MDA | 580-1 | 296 (300-1) | 580- ⁷ / ₈ 296 (300- ⁷ / ₈) | NA |
| CIRCLING | 800-1 515 (600-1) | 920-1 635 (700-1) | 1020-2 735 (800-2) | NA |