

WAAS CH 72815 W19A	APP CRS 193°	Rwy ldg TDZE Apt Elev	8000 74 75
--	------------------------	-----------------------------	---------------------------------------

RNAV (GPS) RWY 19L

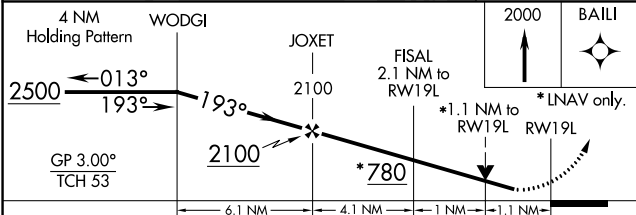
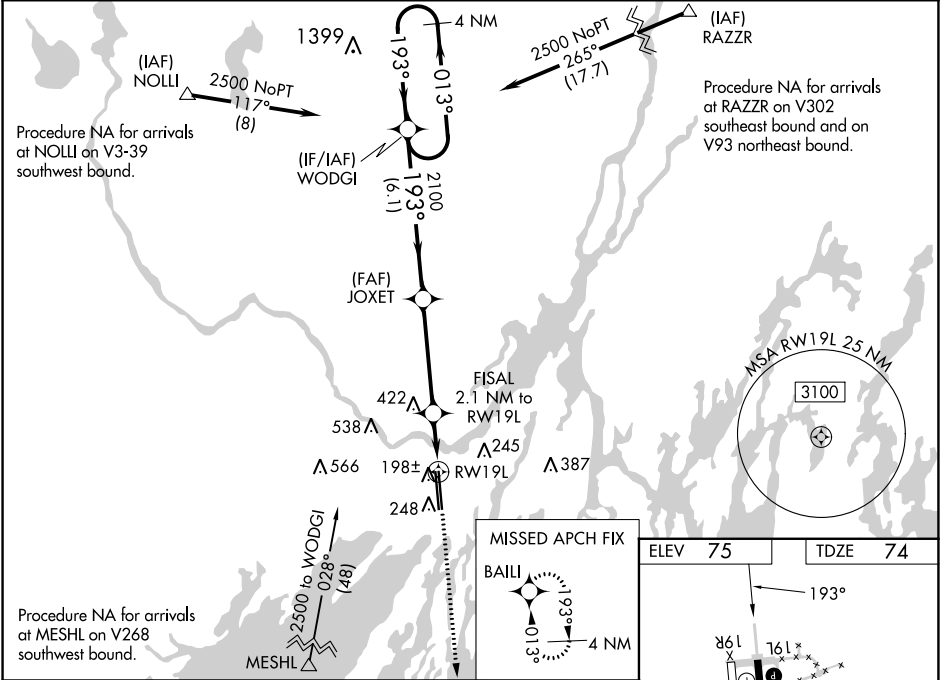
BRUNSWICK EXEC (BXM)

RNP APCH - GPS.

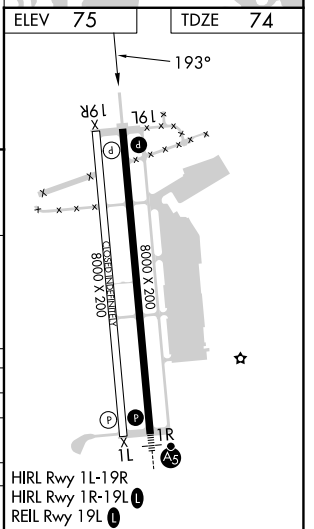
⚠ NA For uncompensated Baro-VNAV systems, LNAV/VNAV NA below -1.5°C or above 43°C. Inop table does not apply to LPV all Cats. Rwy 19L helicopter visibility reduction below 3/4 SM NA. Baro-VNAV and VDP NA with Portland altimeter setting. When local altimeter setting not received, use Portland altimeter setting: increase LPV DA to 382 feet and all visibilities 1/4 SM; increase LNAV/VNAV DA to 410 feet and all visibilities 1/4 SM; increase all MDA 60 feet and LNAV and Circling Cats C/D 1/4 SM.

MISSED APPROACH:
Climb to 2000 direct BAILI and hold.

AWOS-3PT 134.875	PORTLAND APP CON * (112°-292°) 119.75 269.35 (293°-111°) 120.4 299.2	CLNC DEL 123.65	UNICOM 122.725 (CTAF) 0
----------------------------	---	---------------------------	--



CATEGORY	A B C D			
LPV DA	331-3/4 257 (300-3/4)			
LNAV/VNAV DA	359-7/8 285 (300-7/8)			
LNAV MDA	460-1 386 (400-1)		460-1 1/8 386 (400-1 1/8)	
CIRCLING	560-1 485 (500-1)		840-2 1/4 765 (800-2 1/4) 840-2 1/2 765 (800-2 1/2)	



NE-1, 11 JUL 2024 to 08 AUG 2024

NE-1, 11 JUL 2024 to 08 AUG 2024