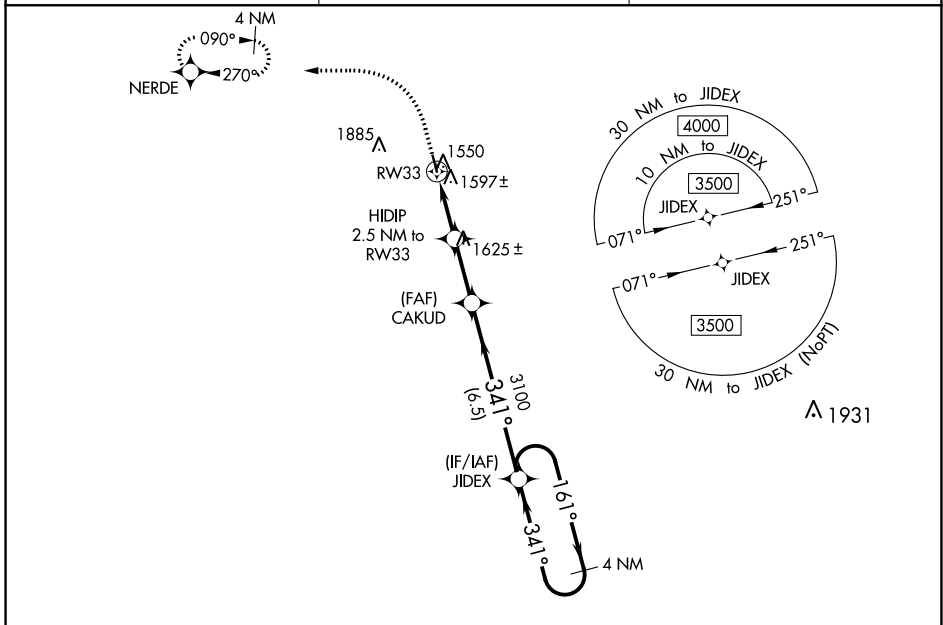


WAAS CH 53540 W33A	APP CRS 341°	Rwy ldg 3500 TDZE 1511 Apt Elev 1511
--	------------------------	---

RNAV (GPS) RWY 33

LAKOTA MUNI (5L~~0~~)

RNP APCH - GPS.	MISSED APPROACH: Climb to 2300 then climbing left turn to 3300 direct NERDE and hold.	
<p>▼ Baro-VNAV NA. Rwy 33 helicopter visibility reduction below ¾ SM NA.</p> <p>▲ NA Circling Rwy 15 NA at night. Use Devils Lake altimeter setting.</p>		
DVL AWOS-3PT 125.875	MINNEAPOLIS CENTER 132.15 269.6	UNICOM 122.8 (CTAF) 0



ELEV 1511	TDZE 1511	R-5403																										
2300	3300	NERDE	VGSI and RNAV glidepath not coincident (VGSI Angle 3.00/TCH 26).																									
<table border="1"> <thead> <tr> <th>CATEGORY</th> <th>A</th> <th>B</th> <th>C</th> <th>D</th> </tr> </thead> <tbody> <tr> <td>LPV DA</td> <td>1827-1 1/8</td> <td>316 (400-1 1/8)</td> <td></td> <td>NA</td> </tr> <tr> <td>LNAV/VNAV DA</td> <td>1827-1 1/8</td> <td>316 (400-1 1/8)</td> <td></td> <td>NA</td> </tr> <tr> <td>LNAV MDA</td> <td>1920-1</td> <td>409 (500-1)</td> <td>1920-1 1/8 409 (500-1 1/8)</td> <td>NA</td> </tr> <tr> <td>C CIRCLING</td> <td>2080-1 569 (600-1)</td> <td>2200-1 689 (700-1)</td> <td>2320-2 1/4 809 (900-2 1/4)</td> <td>NA</td> </tr> </tbody> </table>	CATEGORY	A	B	C	D	LPV DA	1827-1 1/8	316 (400-1 1/8)		NA	LNAV/VNAV DA	1827-1 1/8	316 (400-1 1/8)		NA	LNAV MDA	1920-1	409 (500-1)	1920-1 1/8 409 (500-1 1/8)	NA	C CIRCLING	2080-1 569 (600-1)	2200-1 689 (700-1)	2320-2 1/4 809 (900-2 1/4)	NA	<p>GP 3.00° TCH 40</p>		
CATEGORY	A	B	C	D																								
LPV DA	1827-1 1/8	316 (400-1 1/8)		NA																								
LNAV/VNAV DA	1827-1 1/8	316 (400-1 1/8)		NA																								
LNAV MDA	1920-1	409 (500-1)	1920-1 1/8 409 (500-1 1/8)	NA																								
C CIRCLING	2080-1 569 (600-1)	2200-1 689 (700-1)	2320-2 1/4 809 (900-2 1/4)	NA																								

NC-1, 11 JUL 2024 to 08 AUG 2024

NC-1, 11 JUL 2024 to 08 AUG 2024