

APP CRS	Rwy Idg	N/A
264°	TDZE	N/A
	Apt Elev	720

RNAV (GPS)-A

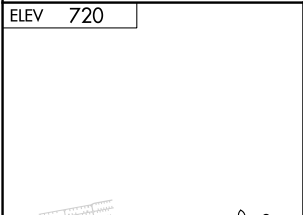
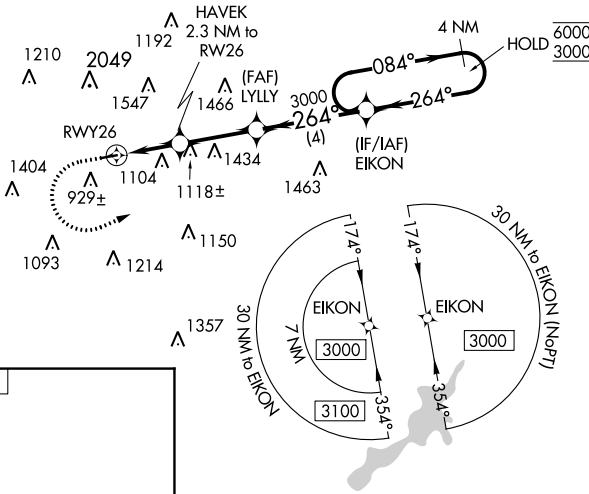
MORAINE AIR PARK (I73)

RNP APCH - GPS.	Procedure NA at night. Rwy 8 and 26 helicopter visibility reduction below 1 SM NA. Use Dayton-Wright Brothers altimeter setting.	MISSED APPROACH: Climb to 1500 then climbing left turn to 3000 direct EIKON and hold.
NA		

MGY ASOS 118.375	COLUMBUS APP CON 118.85 269.275	UNICOM 122.7 (CTAF)
----------------------------	---	-------------------------------

EC-2, 11 JUL 2024 to 08 AUG 2024

EC-2, 11 JUL 2024 to 08 AUG 2024



1500 3000 EIKON	4 NM Holding Pattern
RW26 HAVEK 2.3 NM to RW26 LYLLY EIKON 1780 TCH 40 4.11°	3000 3000 6000 3000 264° 084° 264°
2.3 NM 2.8 NM 4 NM	
CATEGORY	A B C D
CIRCLING	1440-1 720 (800-1) 1520-1 800 (800-1) NA

MIRL Rwy 8-26