

APP CRS	Rwy Idg	<b>3997</b>
<b>281°</b>	TDZE	<b>351</b>
	Apt Elev	<b>351</b>

# RNAV (GPS) RWY 28

KENTUCKY DAM STATE PARK (M34)

RNP APCH - GPS.

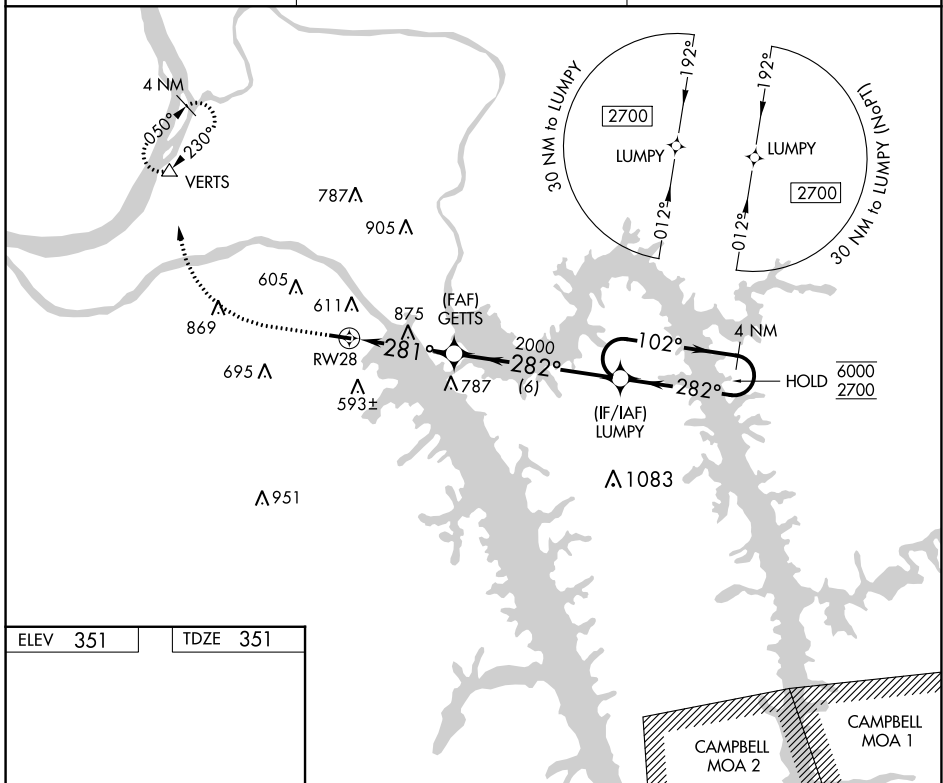
**▽** Circling NA south of Rwy 10-28. Procedure NA at night. Rwy 28 helicopter visibility reduction below 1 SM NA. Use Paducah altimeter setting. Avoid Campbell MOA/A-371 when active.

**MISSED APPROACH:** Climb to 1800 then climbing right turn to 2700 direct VERTS and hold.

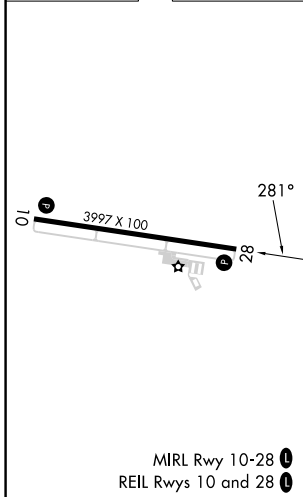
PAH ASOS  
**118.375**

MEMPHIS CENTER  
**133.65 292.15**

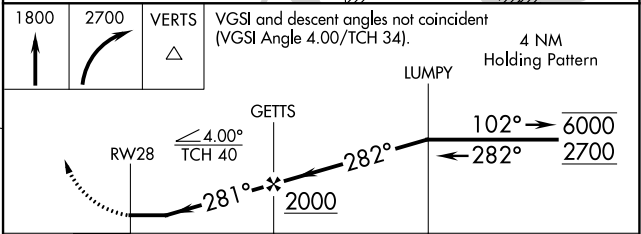
UNICOM  
**123.0 (CTAF) 0**



ELEV 351	TDZE 351
----------	----------



MIRL Rwy 10-28 **0**  
REIL Rws 10 and 28 **0**



CATEGORY	A	B	C	D
LNAV MDA	1200-1 849 (900-1)	1200-1¼ 849 (900-1¼)	NA	
CIRCLING	1200-1¼	849 (900-1¼)	NA	

SE-1, 11 JUL 2024 to 08 AUG 2024

SE-1, 11 JUL 2024 to 08 AUG 2024