

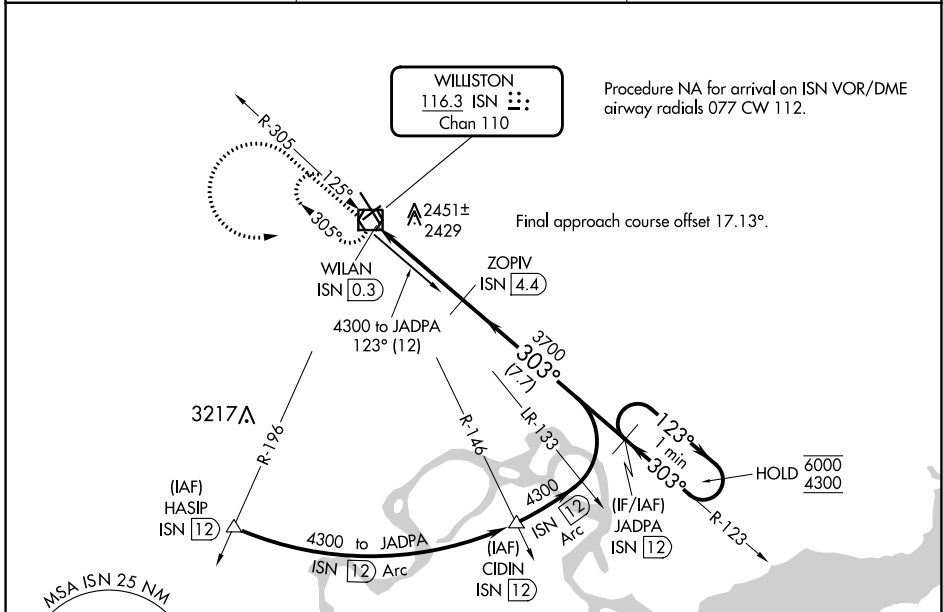
VOR/DME ISN <b>116.3</b> Chan <b>110</b>	APP CRS <b>303°</b>	Rwy Idg TDZE Apt Elev	<b>7503</b> <b>2350</b> <b>2353</b>
--	------------------------	-----------------------------	---

# VOR RWY 32

WILLISTON BASIN INTL (XWA)

DME required.		MALSR	MISSED APPROACH: Climb to 4300 then climbing left turn to 4300 direct ISN VOR/DME and hold
For inop ALS, increase S-32 Cats C/D visibility to 1½ SM.			

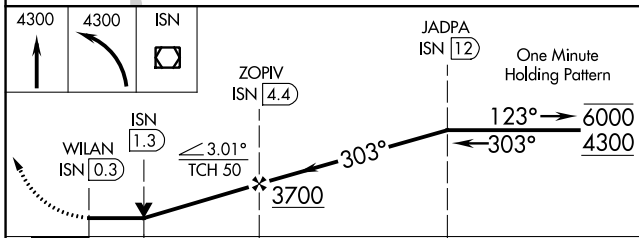
ASOS <b>125.925</b>	SALT LAKE CITY CENTER <b>126.85 305.2</b>	UNICOM <b>122.8</b> (CTAF)
------------------------	--	-------------------------------



NC-1, 11 JUL 2024 to 08 AUG 2024

NC-1, 11 JUL 2024 to 08 AUG 2024

ELEV 2353		TDZE 2350
-----------	--	-----------



CATEGORY	A	B	C	D
S-32	2740-½ 390 (400-½)		2740-¾ 390 (400-¾)	
CIRCLING	2760-1 407 (500-1)	2820-1 467 (500-1)	2820-1½ 467 (500-1½)	2920-2 567 (600-2)

