


WAAS CH 93742 W35A	APP CRS 353°	Rwy Idg TDZE 1409 Apt Elev 1409
--	------------------------	---

RNAV (GPS) RWY 35

SIoux COUNTY RGnL (SXX)

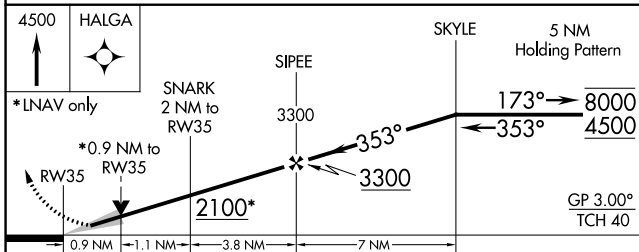
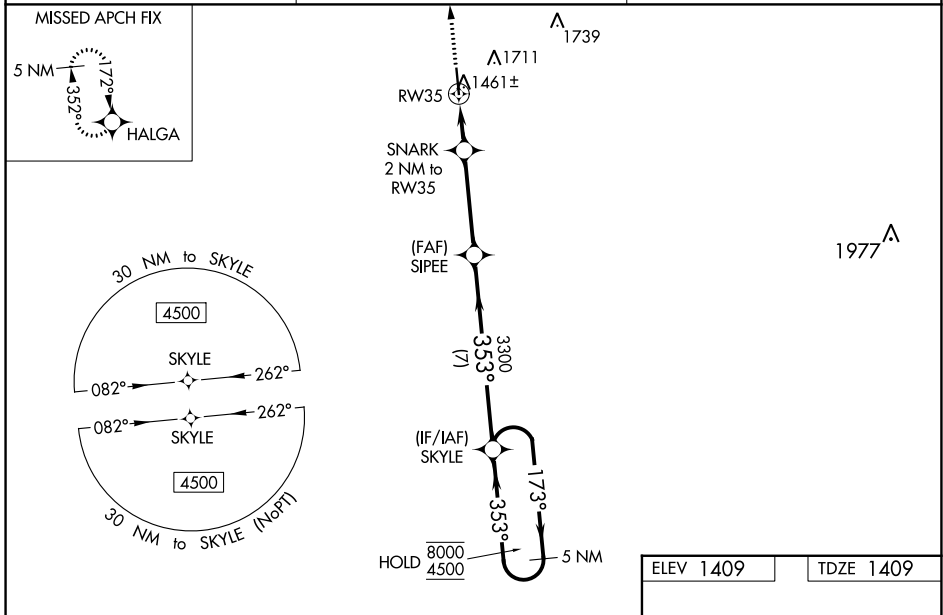
RNP APCH.

⚠ Baro-VNAV and VDP NA when using Le Mars altimeter setting. For uncompensated Baro-VNAV systems, LNAV/VNAV NA below -17°C or above 54°C. When local altimeter setting not received; use Le Mars altimeter setting; increase DA 59 feet and all MDA 60 feet, increase LNAV visibility Cat C/D to 5/8 SM. For inop ALS, increase LNAV/VNAV all Cats visibility to 3/4 SM, and LNAV Cat C/D visibility to 7/8 SM. For inop ALS when using Le Mars altimeter setting increase LNAV/VNAV all Cats visibility to 7/8 SM.

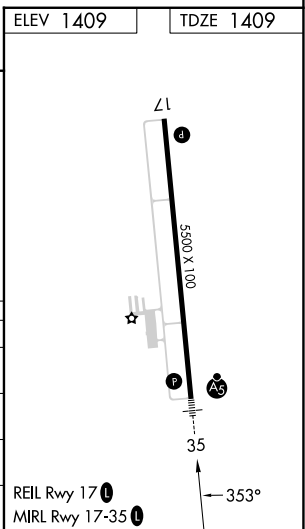
MALSR 

MISSED APPROACH: Climb to 4500 direct HALGA and hold.

AWOS-3P 120.075	SIoux CITY APP CON * 124.6 307.0	UNICOM 122.7 (CTAF)
---------------------------	--	-------------------------------



CATEGORY	A	B	C	D
LPV DA		1609-1/2	200 (200-1/2)	
LNAV/VNAV DA		1659-1/2	250 (300-1/2)	
LNAV MDA		1720-1/2	311 (400-1/2)	
CIRCLING	1820-1 411 (500-1)	2080-1 671 (700-1)	2080-2 671 (700-2)	2080-2 1/4 671 (700-2 1/4)



NC-3, 11 JUL 2024 to 08 AUG 2024

NC-3, 11 JUL 2024 to 08 AUG 2024