

APP CRS	Rwy Idg	6370
066°	TDZE	4882
	Apt Elev	4892

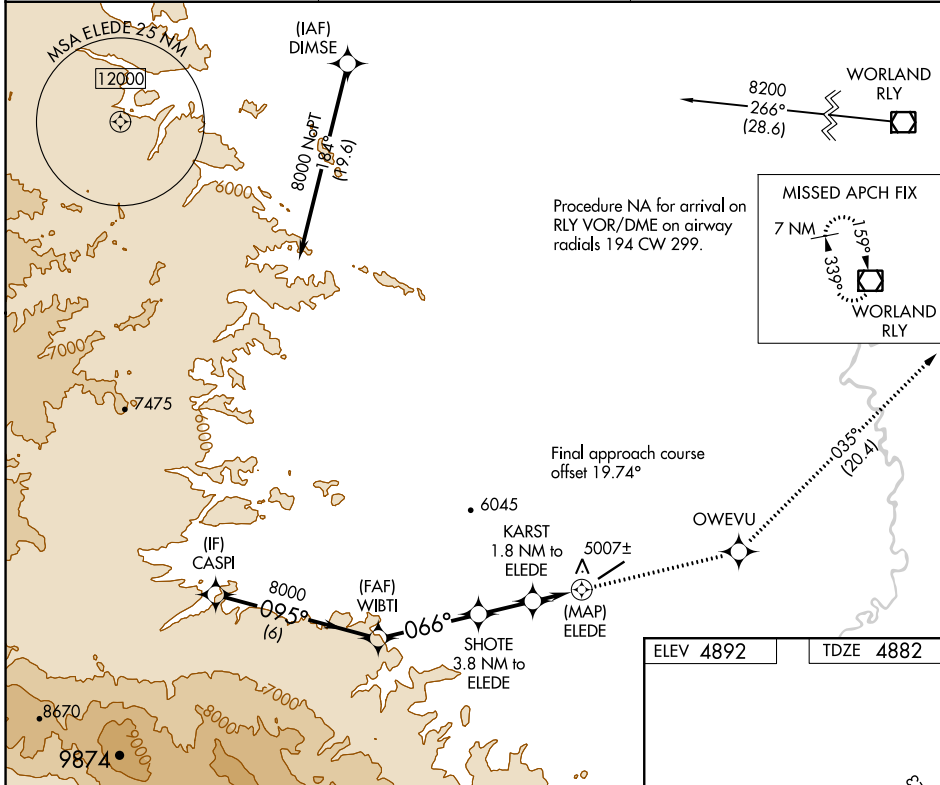
RNAV (GPS) RWY 5

HOT SPRINGS COUNTY (HSG)

⚠ Circling NA northwest of Rwy 5-23.
⚠ DME/DME RNP-0.3 NA.
 Rwy 5 helicopter visibility reduction below 3/4 SM NA.

MISSED APPROACH: Climb to 8200 direct OWEVU and on track 035° to RLY VOR/DME and hold.

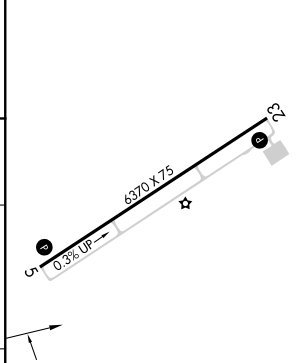
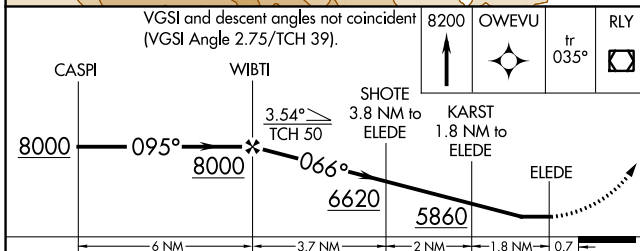
AWOS-3PT 121.125	SALT LAKE CENTER 133.25 285.6	UNICOM 122.8 (CTAF) 0
----------------------------	---	---------------------------------



NW-1, 11 JUL 2024 to 08 AUG 2024

NW-1, 11 JUL 2024 to 08 AUG 2024

ELEV 4892	TDZE 4882
-----------	-----------



CATEGORY	A	B	C	D
LNVA MDA	5240-1 358 (400-1)			NA
C CIRCLING	5320-1 428 (500-1)	5540-1 648 (700-1)	5580-2 688 (700-2)	5880-3 988 (1000-2)

REIL Rwys 5 and 23 **0**
 MIRL Rwy 5-23 **0**