

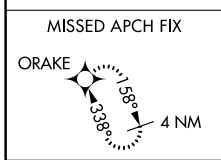
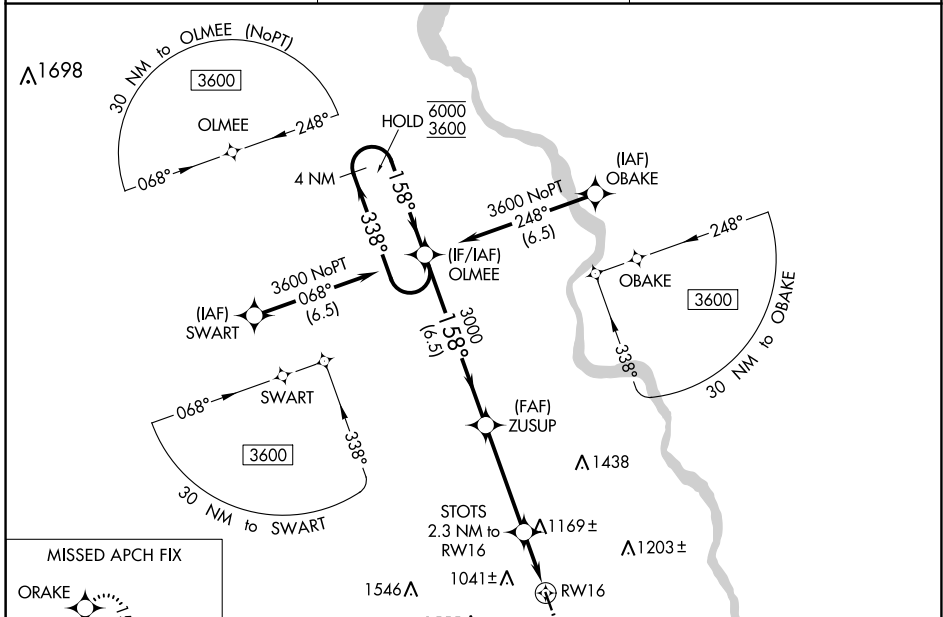
WAAS CH <b>49142</b> <b>W16A</b>	APP CRS <b>158°</b>	Rwy Idg <b>3750</b> TDZE <b>924</b> Apt Elev <b>924</b>
--	------------------------	---

# RNAV (GPS) RWY 16

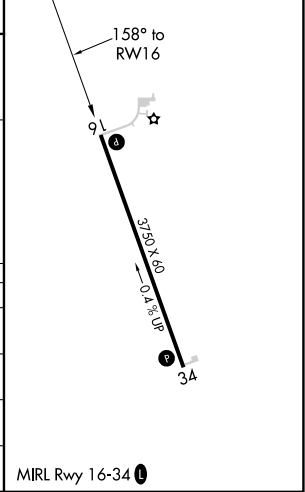
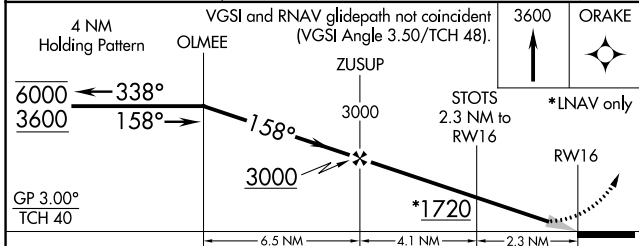
FARINGTON FLD (K01)

RNP APCH.	<p>▼ Circling NA for Cat C west of Rwy 16-34. ▲ NA Baro-VNAV NA. Use Brenner Fld altimeter setting.</p>	<p>MISSED APPROACH: Climb to 3600 direct ORAKE and hold, continue climb-in-hold to 3600.</p>
-----------	---	--

FNB ASOS <b>119.275</b>	MINNEAPOLIS CENTER <b>128.75 346.3</b>	CTAF <b>122.9</b>
----------------------------	---	----------------------



ELEV 924	TDZE 924
----------	----------



CATEGORY	A	B	C	D
LPV DA	1180-1 256 (300-1)			NA
LNAV/VNAV DA	1230-1 306 (400-1)			NA
LNAV MDA	1480-1 556 (600-1)		1480-1½ 556 (600-1½)	NA
CIRCLING	1480-1 556 (600-1)		1540-1¾ 616 (700-1¾)	NA

NC-2, 11 JUL 2024 to 08 AUG 2024

NC-2, 11 JUL 2024 to 08 AUG 2024