

LOC I-ABE <b>110.7</b>	APP CRS <b>063°</b>	Rwy Idg TDZE Apt Elev	<b>7599</b> <b>394</b> <b>394</b>
---------------------------	------------------------	-----------------------------	---

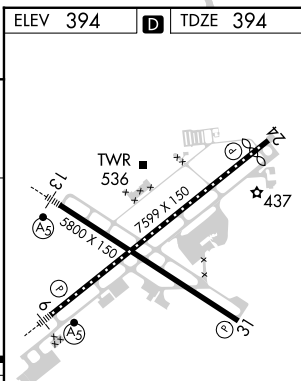
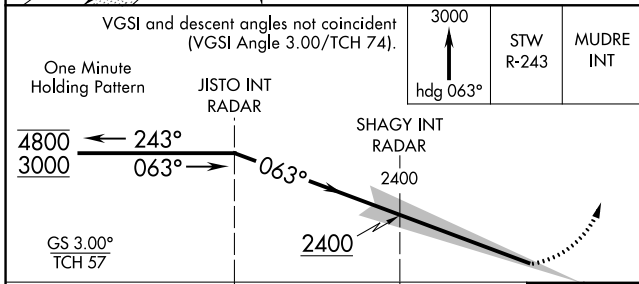
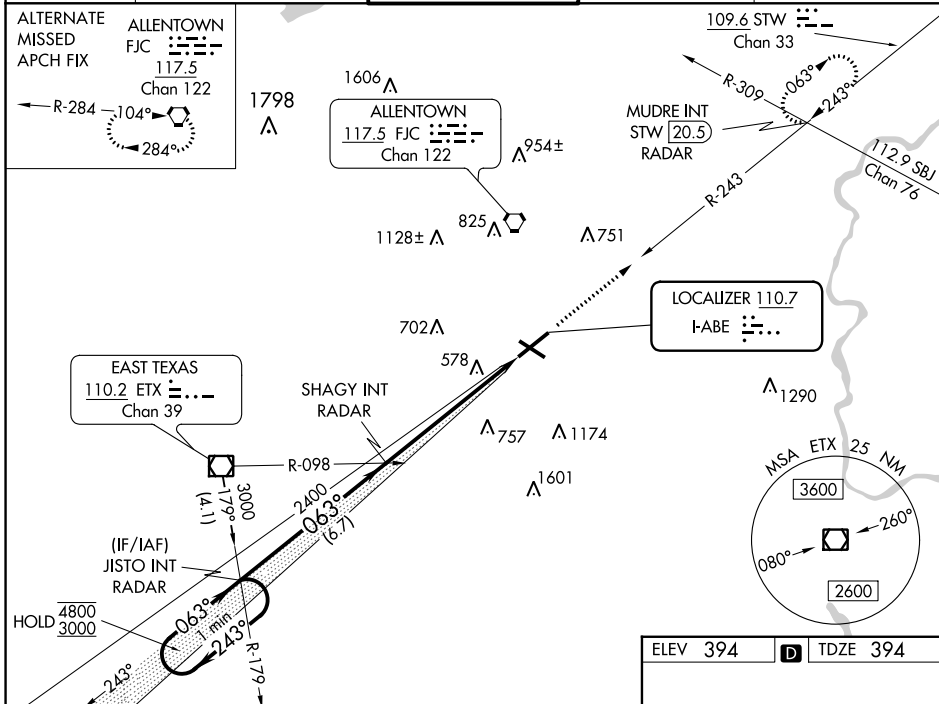
# ILS RWY 6 (SA CAT I & II)

LEHIGH VALLEY INTL (ABE)

**SA CAT I:** Requires specific OPSPEC, MSPEC, or LOA approval and use of HUD to DH. **SA CAT II:** Reduced lighting: Requires specific OPSPEC, MSPEC, or LOA approval and use of autoland or HUD to touchdown.

**MALSR** MISSED APPROACH: Climb to 3000 on heading 063° and STW R-243 to MUDRE INT/STW 20.5 DME/RADAR and hold.

ATIS <b>126.975</b>	ALLENTOWN APP CON <b>119.65 124.45 351.8</b>	ALLENTOWN TOWER <b>120.5 257.95</b>	GND CON <b>121.9 257.95</b>	CLNC DEL <b>124.05 257.95</b>
------------------------	---	--	--------------------------------	----------------------------------



CATEGORY	A	B	C	D
S-ILS 6	SA CAT I	RA 154/14	150 DA 544	
S-ILS 6	SA CAT II	RA 114/12	100 DA 494	

ELEV 394	<b>D</b>	TDZE 394
----------	----------	----------

REIL Rwy 24 and 31  
HIRL Rwy 6-24 and 13-31

**SA CATEGORY I & II ILS - SPECIAL AIRCREW & AIRCRAFT CERTIFICATION REQUIRED**

NE-4, 08 AUG 2024 to 05 SEP 2024

NE-4, 08 AUG 2024 to 05 SEP 2024