

| | | | |
|--|------------------------|-----------------------------|---------------------------------------|
| WAAS CH 90310 W12A | APP CRS 119° | Rwy Idg TDZE Apt Elev | 5002 60 61 |
|--|------------------------|-----------------------------|---------------------------------------|

RNAV (GPS) RWY 12

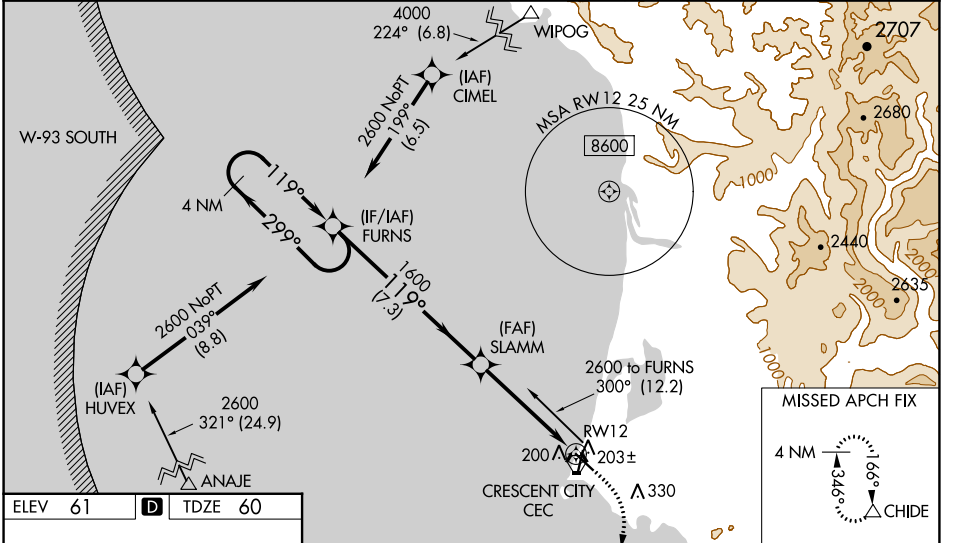
JACK MC NAMARA FLD (CEC)

▽ Inop table does not apply to LPV all Cats. For uncompensated Baro-VNAV systems, LNAV/VNAV NA below 0°C (32°F) or above 54°C (130°F). DME/DME RNP-0.3 NA. When local altimeter setting not received, use Brookings altimeter setting and increase LPV DA to 407 feet, LNAV/VNAV DA to 484 feet and all MDA 100 feet; increase LPV all Cats visibility to ½ mile, LNAV/VNAV all Cats visibility to 1½ mile, LNAV Cat C/D to 1½ mile, and Circling Cat C to 2 miles, Cat D to 2½ miles. For inop MALS, increase LNAV/VNAV all Cats visibility to 1 mile and LNAV Cat A/B visibility to 1 mile, Cat C/D to 1½ mile. For inop MALS, when using Brookings altimeter setting, increase LPV all Cats visibility to 1½ mile, LNAV/VNAV all Cats visibility to 1¾ mile, and LNAV Cat A/B to 1 mile, Cat C/D to 1¾ mile. VDP and Baro-VNAV NA when using Brookings altimeter setting. Night landing: Rwy 18, 30 NA. Night landing: Rwy 36, operational VGSI required, remain on or above VGSI glidepath until threshold.

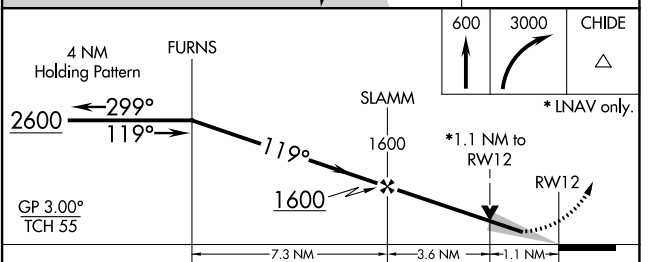
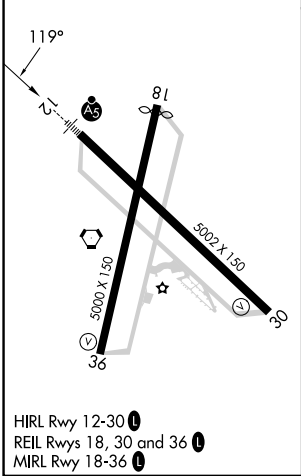
MALS

MISSED APPROACH:
Climb to 600 then climbing right turn to 3000 direct CHIDE and hold, continue climb-in-hold to 3000.

| | | |
|------------------------|---------------------------------------|---------------------------------|
| ASOS 119.925 | SEATTLE CENTER 124.85 306.3 | UNICOM 122.8 (CTAF) 0 |
|------------------------|---------------------------------------|---------------------------------|



| | | |
|---------|----------|---------|
| ELEV 61 | D | TDZE 60 |
|---------|----------|---------|



| CATEGORY | A | B | C | D |
|-------------------|-------|-------------|------------------------|----------------------|
| LPV DA | | 310-¾ | 250 (300-¾) | |
| LNAV/VNAV DA | | 387-¾ | 327 (400-¾) | |
| LNAV MDA | 460-¾ | 400 (400-¾) | 460-⅞ | 400 (400-⅞) |
| C CIRCLING | 540-1 | 479 (500-1) | 640-1½ 579 (600-1½) | 640-2 579 (600-2) |

SW-2, 08 AUG 2024 to 05 SEP 2024

SW-2, 08 AUG 2024 to 05 SEP 2024