


VORTAC CEC	APP CRS	Rwy Idg	5002
109.0	131°	TDZE	60
Chan 27		Apt Elev	61

# VOR/DME RWY 12

JACK MC NAMARA FLD (CEC)

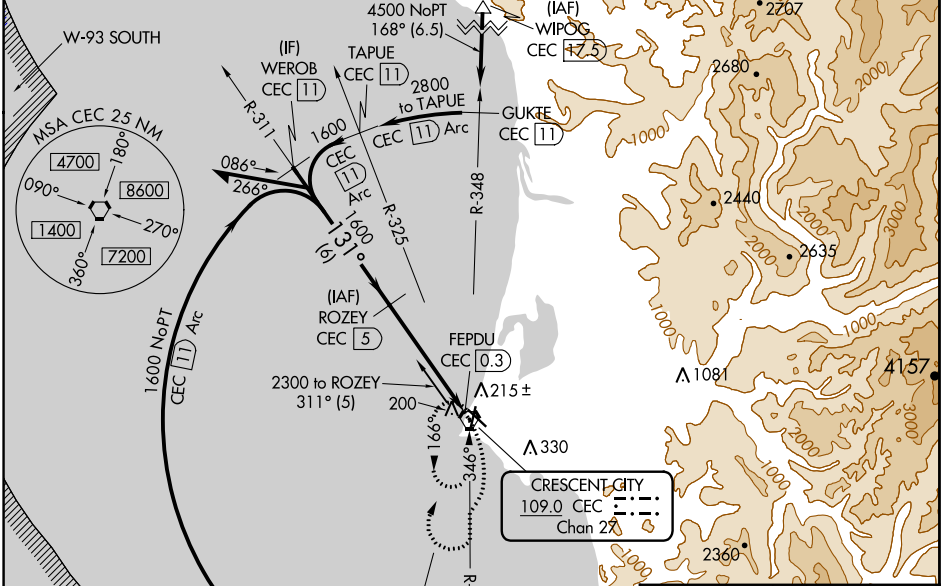
**⚠** VDP NA with Brookings altimeter setting. When local altimeter setting not received, use Brookings altimeter setting and increase all MDA 100 feet; increase S-12 Cat C/D, and Circling Cat D visibility ¼ mile, and Circling Cat C visibility ½ mile. For inop MALSRS, increase S-12 Cats A/B visibility to 1 mile, Cats C/D visibility to 1½ mile. For inop MALSRS when using Brookings altimeter setting, increase S-12 Cats A/B visibility to 1 mile, Cats C/D visibility to 1½ mile. Night Landing: Rwy 18, 30 NA. Night Landing: Rwy 36 operational VGSJ required, remain on or above VGSJ glidepath until threshold.

**MALSRS**

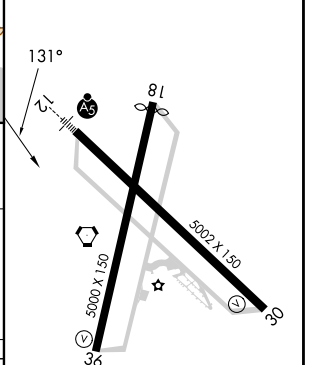
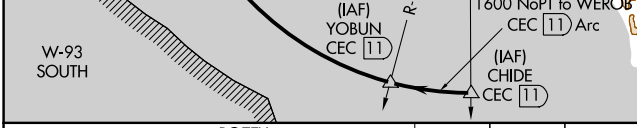


**MISSED APPROACH:**  
Climbing right turn to 3000 on CEC VORTAC R-166 then right turn direct CEC VORTAC and hold.

ASOS <b>119.925</b>	SEATTLE CENTER <b>124.85 306.3</b>	UNICOM <b>122.8 (CTAF)</b>
------------------------	---------------------------------------	-------------------------------



ELEV 61	TDZE 60
---------	---------



Remain within 10 NM	ROZEY CEC 5	3000	CEC
		CEC R-166	
		CEC 1.4	FEPDU CEC 0.3
		3.6 NM	1.2 NM

CATEGORY	A	B	C	D
S-12	480-¾	420 (500-¾)	480-1	420 (500-1)
<b>C</b> CIRCLING	540-1	479 (500-1)	640-1½ 579 (600-1½)	640-2 579 (600-2)

HIRL Rwy 12-30  
REIL Rws 18, 30 and 36  
MIRL Rwy 18-36

SW-2, 08 AUG 2024 to 05 SEP 2024

SW-2, 08 AUG 2024 to 05 SEP 2024