

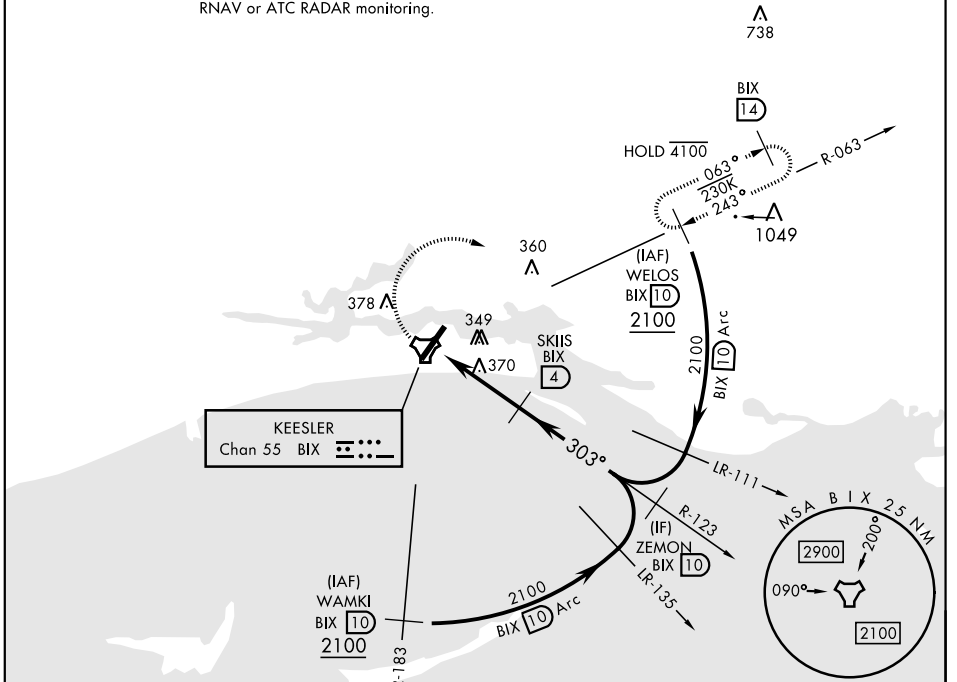
TACAN-A

TACAN BIX Chan 55	APCH CRS 303°	Rwy ldg THRE Arprt Elev N/A N/A 33	AL-49 [USAF]	KEESLER AFB (KBIX)
-----------------------------	-------------------------	--	--------------	--------------------

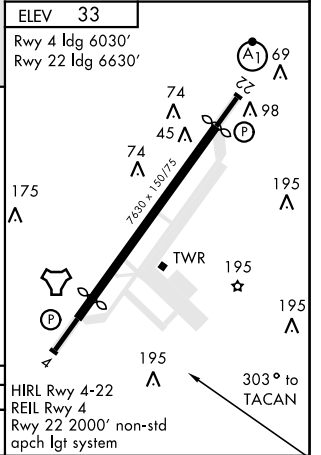
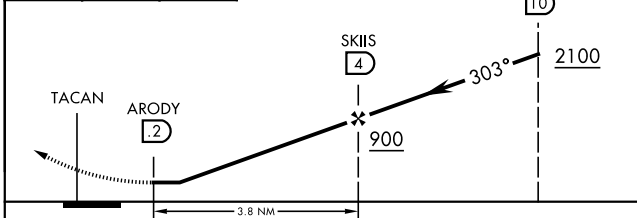
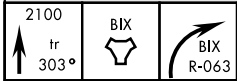
† MISSED APPROACH: Climb tracking 303° to BIX TACAN then right turn to intercept BIX R-063 climbing to 2100 to 10 DME (WELOS) and hold.

ATIS 281.55	GULFPORT APP CON 124.6 354.1 (130°- 309°) 127.5 254.25 (310°- 129°)	KEESLER TOWER ★ 120.75 269.075	GND CON 121.8 275.8	CLNC DEL 121.8 275.8
-----------------------	---	--	-------------------------------	--------------------------------

† Missed approach requires use of RNAV or ATC RADAR monitoring.



EMERG SAFE ALT 100 NM 3100



CATEGORY	A	B	C	D
CIRCLING	620-1	660-1	680-1 3/4	680-2
	587 (600-1)	627 (700-1)	647 (700-1 3/4)	647 (700-2)

HIRL Rwy 4-22
REIL Rwy 4
Rwy 22 2000' non-std
apch lgt system

TACAN-A

SC-4, 08 AUG 2024 to 05 SEP 2024

SC-4, 08 AUG 2024 to 05 SEP 2024