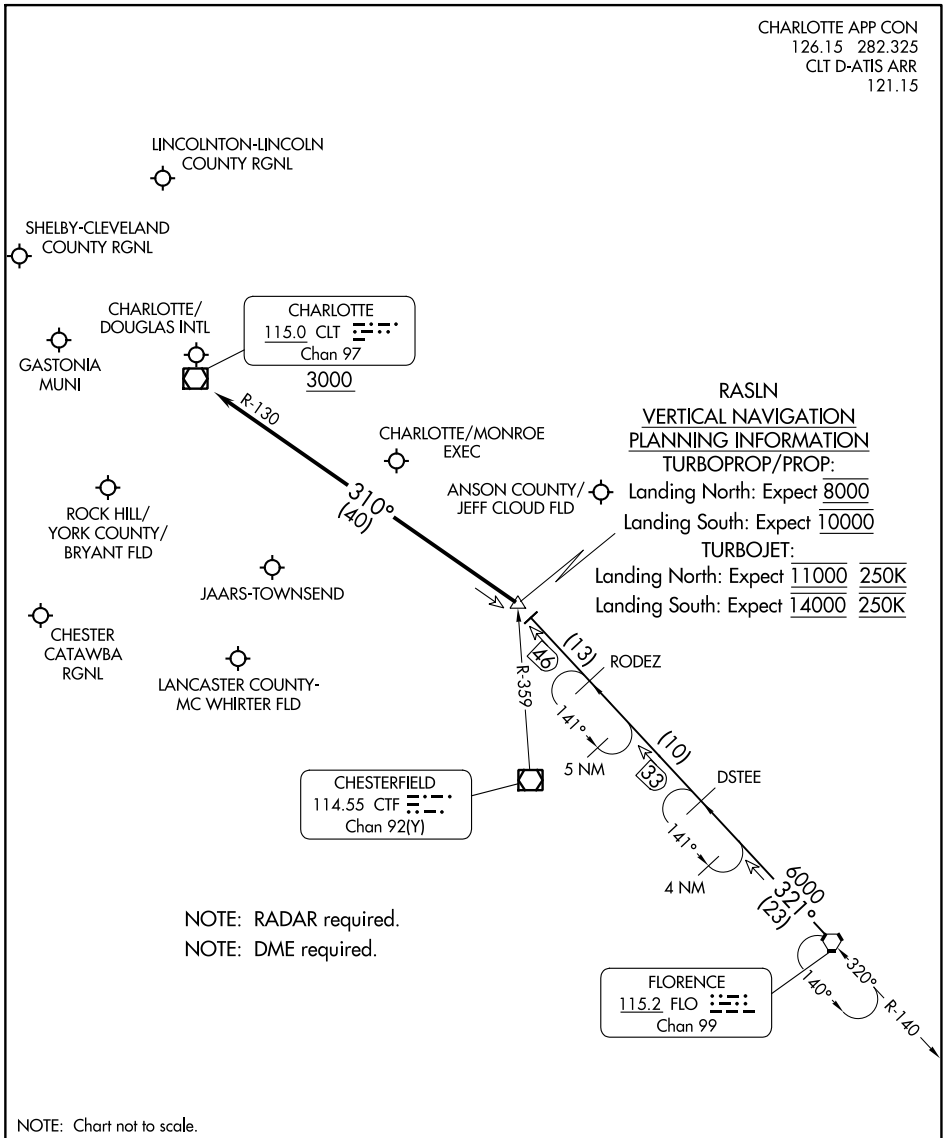


# RASLN THREE ARRIVAL

CHARLOTTE, NORTH CAROLINA

CHARLOTTE APP CON  
126.15 282.325  
CLT D-ATIS ARR  
121.15



SE-2, 08 AUG 2024 to 05 SEP 2024

SE-2, 08 AUG 2024 to 05 SEP 2024

NOTE: Chart not to scale.

## ARRIVAL ROUTE DESCRIPTION

FLORENCE TRANSITION (FLO.RASLN3): From over FLO VORTAC on FLO R-321 to RASLN INT. Thence . . . .

. . . . from RASLN on CLT R-130 to cross CLT VOR/DME at or above 3000. Expect RADAR vectors to destination airport or final approach course prior to CLT VOR/DME.

# RASLN THREE ARRIVAL

(RASLN.RASLN3) 17AUG17

CHARLOTTE, NORTH CAROLINA