

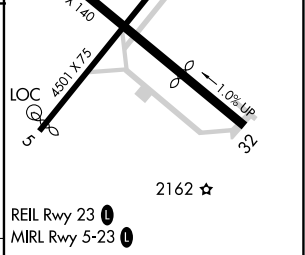
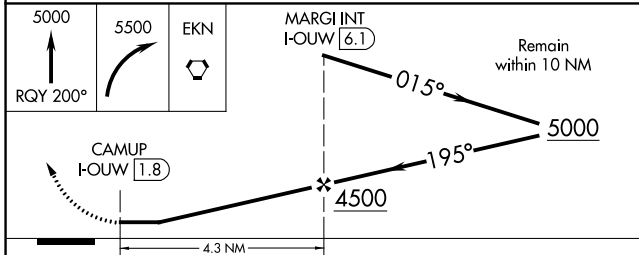
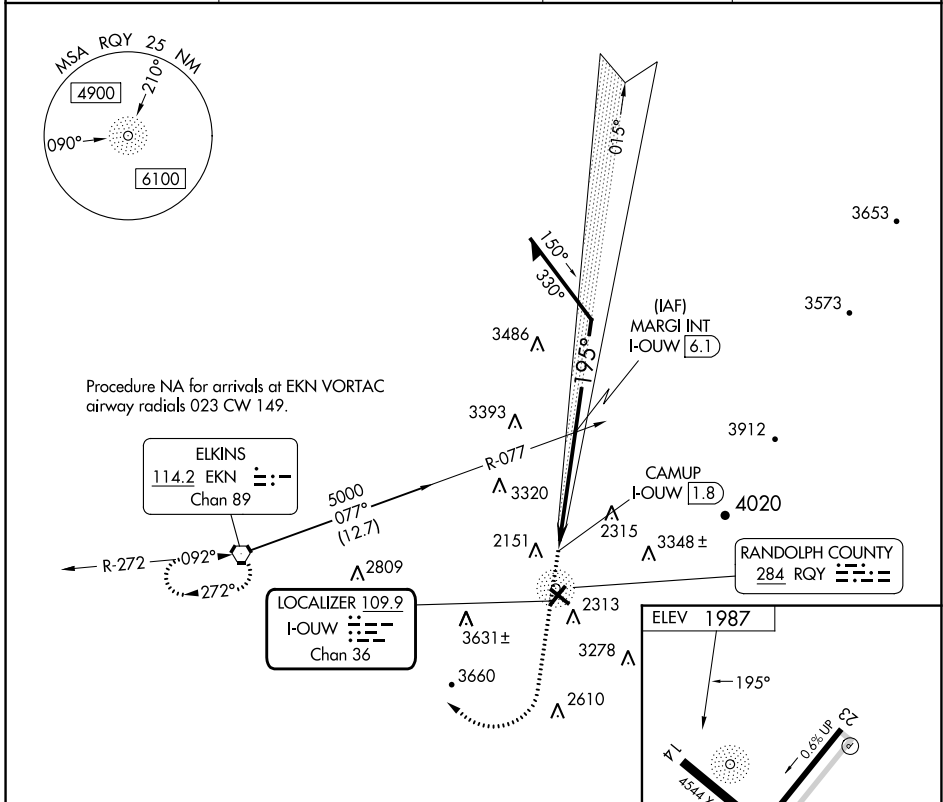
LOC/DME I-OUW 109.9 Chan 36	APP CRS 195°	Rwy Idg TDZE Apt Elev	N/A N/A 1987
--	------------------------	-----------------------------	---

ELKINS/
RANDOLPH COUNTY (JENNINGS RANDOLPH FLD) (EKN)

LDA-C

ADF REQUIRED	MISSED APPROACH: Climb to 5000 on RQY NDB 200° then climbing right turn to 5500 direct EKN VORTAC and hold.
<p>▼</p> <p>⚠</p> <p>❄ -20°C</p>	<p>⚠ Circling Rwy 14, 23, 32 NA at night. When local altimeter setting not received, use Buckhannon altimeter setting and increase all MDA 100 feet.</p>

ASOS 119.275	CLARKSBURG APP CON ★ 121.15 284.65	CTAF 123.6	122.9 0
------------------------	--	----------------------	----------------



CATEGORY	A	B	C	D	FAF to MAP 4.3 NM					
CIRCLING	3100-1¼ 1113 (1200-1¼)	3140-1½ 1153 (1200-1½)	3720-3 1733 (1800-3)	4020-3 2033 (2100-3)	Knots	60	90	120	150	180
					Min:Sec	4:18	2:52	2:09	1:43	1:26

ELKINS, WEST VIRGINIA
Amdt 8 24MAY18

ELKINS/RANDOLPH COUNTY (JENNINGS RANDOLPH FLD) (EKN)
38°53'N-79°51'W

LDA-C

NE-4, 08 AUG 2024 to 05 SEP 2024

NE-4, 08 AUG 2024 to 05 SEP 2024