


WAAS CH 60911 W16B	APP CRS 163°	Rwy Idg TDZE Apt Elev	9010 570 608
----------------------------------------	------------------------	-----------------------------	-----------------------------------------

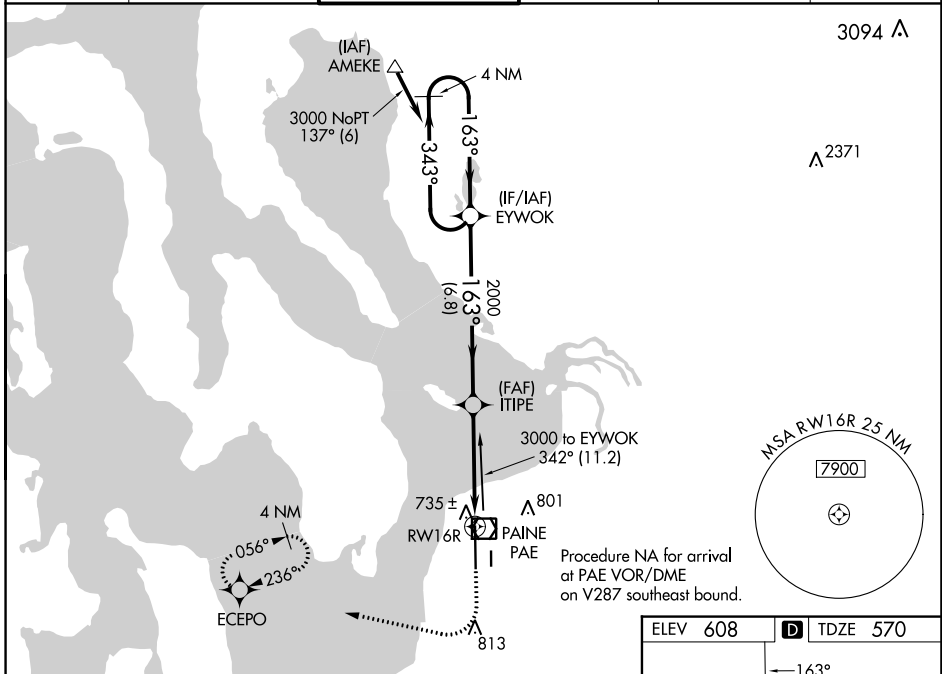
RNAV (GPS) Y RWY 16R

SEATTLE PAINE FLD INTL (P.A.E.)

▽ For uncompensated Baro-VNAV systems, LNAV/VNAV NA below -5°C (23°F) or above 54°C (130°F). Circling Rwy 34R NA at night. DME/DME RNP-0.3 NA. For inop ALS, increase LNAV/VNAV Cats A/B visibility to RVR 5000.

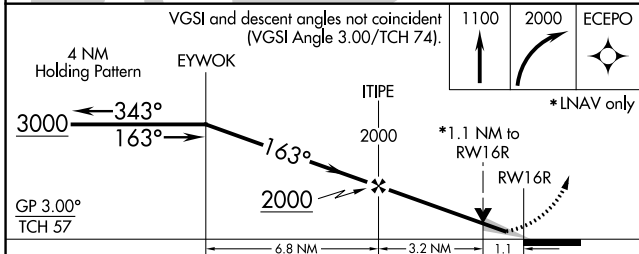
MALSR
 MISSED APPROACH: Climb to 1100 then climbing right turn to 2000 direct ECEPO and hold.

ATIS 128.65	SEATTLE APP CON 128.5 306.9	PAINE TOWER * 132.95 (CTAF) 0 256.7	GND CON 121.8 339.8	CLNC DEL 127.175	UNICOM 122.95
-----------------------	---------------------------------------	-----------------------------------------------	-------------------------------	----------------------------	-------------------------



NW-1, 08 AUG 2024 to 05 SEP 2024

NW-1, 08 AUG 2024 to 05 SEP 2024



CATEGORY	A	B	C	D
LPV DA	770/18	200 (200-½)		NA
LNAV/VNAV DA	894/30	324 (300-⅝)		NA
LNAV MDA	1000/24	430 (400-½)		NA
C CIRCLING	1100-1	492 (500-1)		NA

