

LOC I-GLS 111.7	APP CRS 138°	Rwy ldg TDZE Apt Elev 6000 5 6
---------------------------	------------------------	--

ILS or LOC RWY 14

SCHOLES INTL AT GALVESTON (GLS)

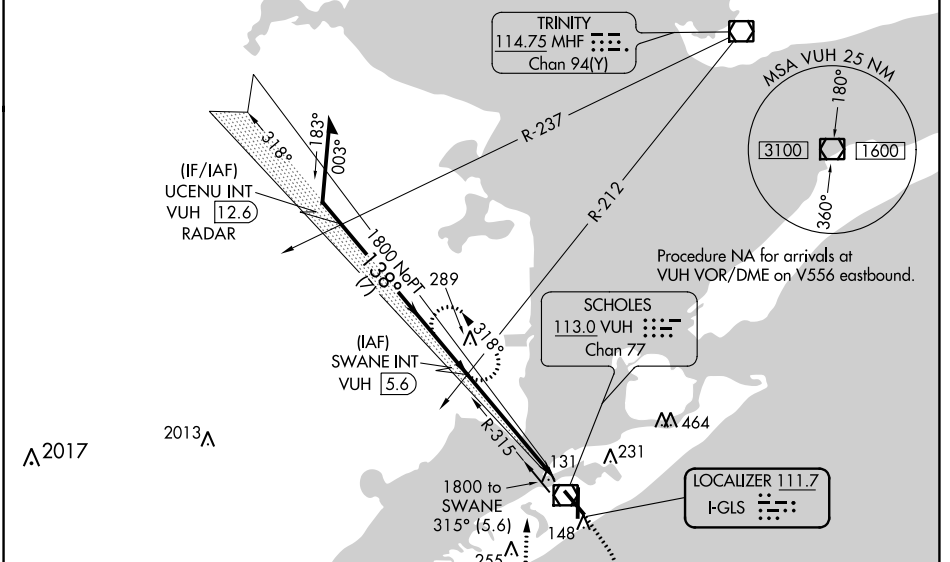
RADAR required for procedure entry at UCENU.

NA Circling NA east of Rwy 18 and northeast of Rwy 32. For inop ALS, increase S-LOC 14 Cat A and B visibility to 1 SM. DME from VUH VOR/DME. Simultaneous reception of I-GLS and VUH DME required. Inop table does not apply to S-ILS 14 all Cats.

MALSR

MISSED APPROACH: Climb to 1200 then climbing right turn to 2400 on heading 360° and VUH VOR/DME R-315 to SWANE INT/VUH 5.6 DME and hold, continue climb-in-hold to 2400.

ASOS 123.95	HOUSTON APP CON 134.45 284.0	GALVESTON TOWER * 120.575 (CTAF) 0	GND CON 118.625	CLNC DEL 135.35 (When twr dosed)	UNICOM 123.05
-----------------------	--	---	---------------------------	---	-------------------------

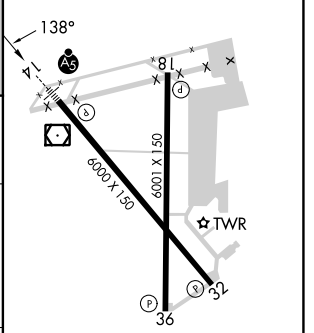


SC-5, 08 AUG 2024 to 05 SEP 2024

SC-5, 08 AUG 2024 to 05 SEP 2024



ELEV 6	TDZE 5
--------	--------



SWANE INT VUH 5.6	1200	2400	VUH R-315	SWANE INT
1800	↑	hdg 360°		
1800			VUH 1.3	
			4.1 NM	1.4 NM

CATEGORY	A	B	C	D
S-ILS 14	205-3/4 200 (200-3/4)			
S-LOC 14	460-3/4	455 (500-3/4)	460-7/8	455 (500-7/8)
CIRCLING	500-1 494 (500-1)	520-1 514 (600-1)	620-13/4 614 (700-13/4)	620-2 614 (700-2)

REIL Rwy 18, 32, and 36					
MIRL Rwy 18-36					
HIRL Rwy 14-32					
FAF to MAP 5.5 NM					
Knots	60	90	120	150	180
Min:Sec	5:30	3:40	2:45	2:12	1:50