

# LURIC EIGHT DEPARTURE (RNAV)

ASOS  
 123.95  
 CLNC DEL (when twr closed)  
 135.35  
 GND CON  
 118.625  
 GALVESTON TOWER ★  
 120.575 (CTAF)  
 HOUSTON DEP CON  
 134.45 284.0

**TOP ALTITUDE: ASSIGNED BY ATC**

NOTE: RADAR required.  
 NOTE: DME/DME/IRU or GPS required.  
 NOTE: RNAV 1.

### TAKEOFF MINIMUMS

Rwys 14, 18, 32, 36:

Standard with minimum climb of 500' per NM to 520.

### DEPARTURE ROUTE DESCRIPTION

**TAKEOFF RUNWAY 14:** Climb on heading 138°

to 520 for RADAR vectors to KNTKY, thence . . .

**TAKEOFF RUNWAY 18:** Climb on heading 179°

to 520 for RADAR vectors to KNTKY, thence . . .

**TAKEOFF RUNWAY 32:** Climb on heading 318°

to 520 for RADAR vectors to KNTKY, thence . . .

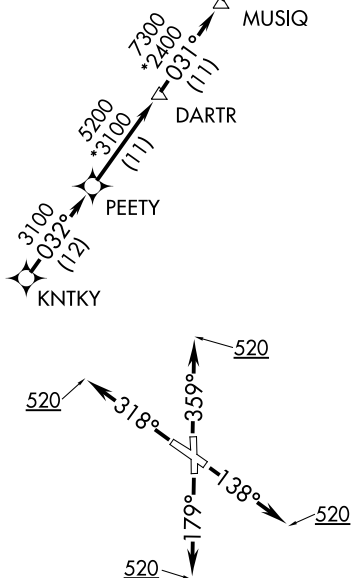
**TAKEOFF RUNWAY 36:** Climb on heading 359°

to 520 for RADAR vectors to KNTKY, thence . . .

. . . on track 032° to PEETY, then on track 032° to DARTR, then on track 031° to MUSIQ, then on track 031° to CLAVN, then on track 031° to VELCO, then on track 031° to ENJOY, then on track 031° to LURIC, then on (transition). Maintain ATC assigned altitude. Expect filed altitude 10 minutes after departure.

**HAWES TRANSITION (LURIC8.HAWES)**

**ORRTH TRANSITION (LURIC8.ORRTH)**



NOTE: Chart not to scale.

SC-5, 08 AUG 2024 to 05 SEP 2024

SC-5, 08 AUG 2024 to 05 SEP 2024