

LOC/DME I-VZE 108.95 Chan 26 (Y)	APP CRS 273°	Rwy ldg 10800
		TDZE 651
		Apt Elev 680

ILS RWY 28C (CAT II & III)

CHICAGO O'HARE INTL (ORD)

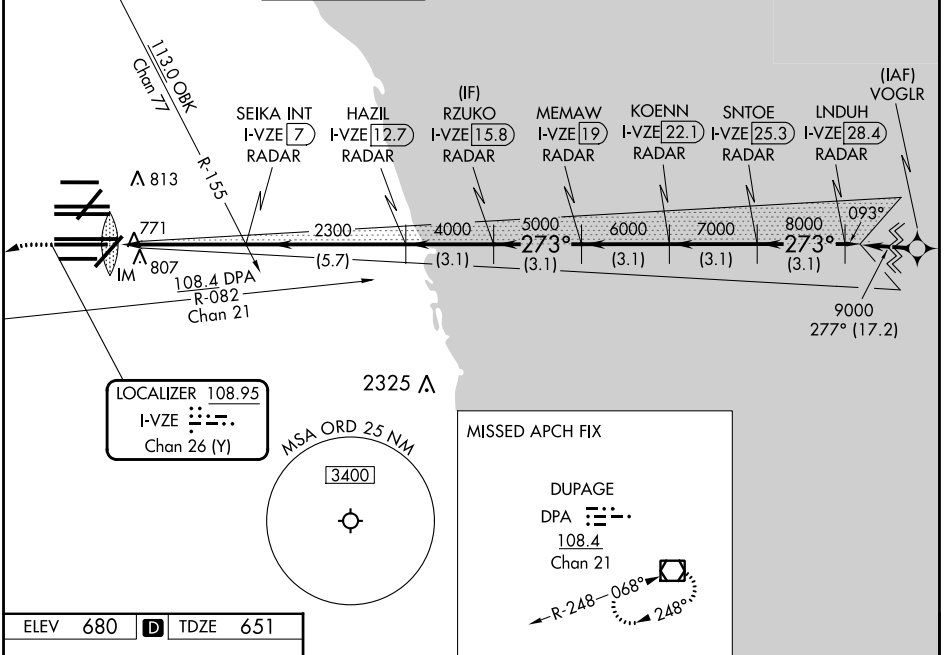
From VOGLR: RNAV 1-GPS required.
Aircraft not GPS equipped - RADAR required for procedure entry.
DME or RADAR required.



MISSED APPROACH: Climb to 1100 then climbing left turn to 4000 on heading 215° and DPA VOR/DME R-082 to DPA VOR/DME and hold.

Simultaneous approach authorized. CAT II: RVR 1000 authorized with specific OPSPEC, MSPEC, or LOA approval and use of autoland or HUD to touchdown.

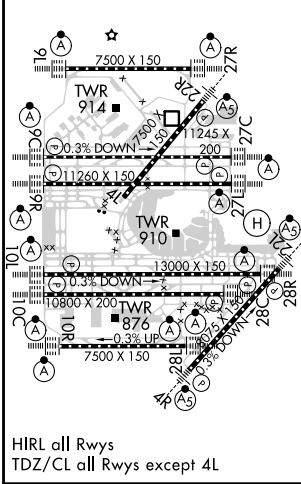
D-ATIS 135.4 282.225	CHICAGO APP CON 119.0 292.125	O'HARE TOWER 120.75 348.0	GND CON 124.125 (TWR NORTH) 118.05 (TWR SOUTH) 226.675 (ALL TWRs)	(TWR CENTER) 121.75 (OBND) 121.9 (IBND)	CLNC DEL 121.6	CPDLC
------------------------------------------	-----------------------------------------	-------------------------------------	-------------------------------------------------------------------------------------------------	-------------------------------------------------------------	--------------------------	-------



EC-3, 08 AUG 2024 to 05 SEP 2024

EC-3, 08 AUG 2024 to 05 SEP 2024

ELEV 680	D	TDZE 651
----------	---	----------



1100	4000	DPA R-082	DPA	VGSI and ILS glidepath not coincident (VGSI Angle 3.00/TCH 80).	INDUH I-VZE 28.4 RADAR
hdg 215°					RZUKO I-VZE 15.8 RADAR
					KOENN I-VZE 22.1 RADAR
					SNTOE I-VZE 25.3 RADAR
					MEMAW I-VZE 19 RADAR
					HAZIL I-VZE 12.7 RADAR
					SEIKA INT I-VZE 7 RADAR
					IM 2300
					750
					2300
					4000
					5000
					6000
					7000
					8000
					9000
					GS 3.00° TCH 55
					5 NM
					5.7 NM
					3.1 NM
					3.1 NM
					3.1 NM
					3.1 NM
					3.1 NM
CATEGORY	A	B	C	D	
S-ILS 28C	CAT II RA 105/12 100 DA 751				
S-ILS 28C	CAT III RVR 06				

CATEGORY II & III ILS - SPECIAL AIRCREW & AIRCRAFT CERTIFICATION REQUIRED