

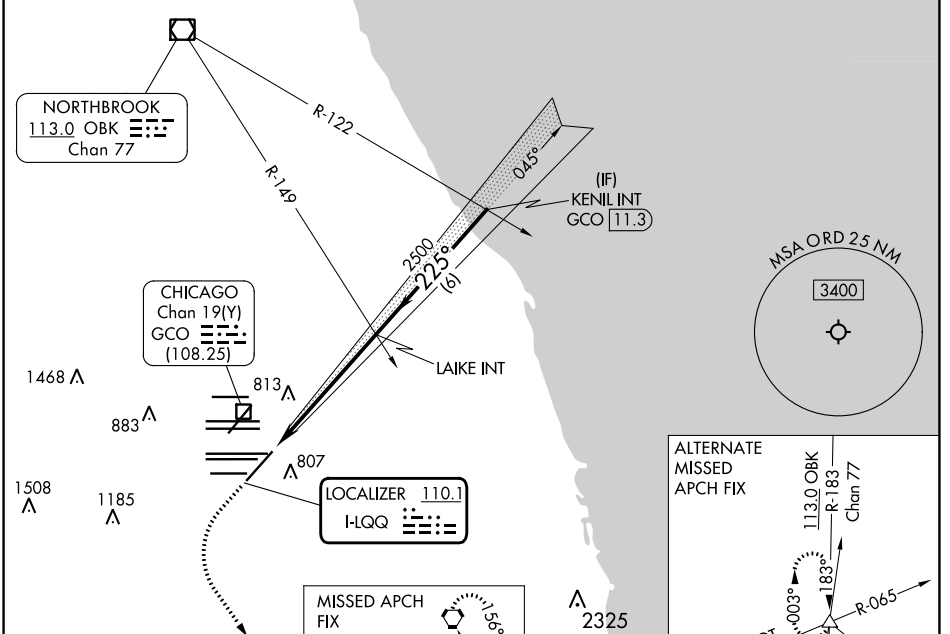
LOC I-LQQ 110.1	APP CRS 225°	Rwy ldg TDZE Apt Elev	8075 654 680
---------------------------	------------------------	-----------------------------	---

ILS or LOC RWY 22L

CHICAGO O'HARE INTL (ORD)

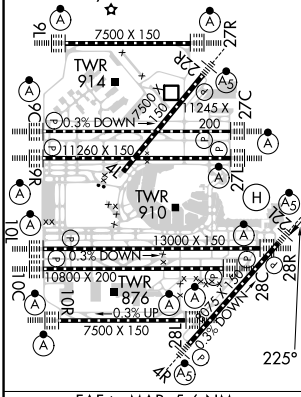
RADAR required for procedure entry.		MALSR	MISSED APPROACH: Climb to 1100 then climbing left turn to 4000 direct CGT VORTAC and hold.	
Simultaneous approach authorized.				

D-ATIS 135.4	CHICAGO APP CON 119.0 292.125	O'HARE TOWER 120.75 348.0	GND CON (TWR NORTH) 124.125 (TWR SOUTH) 118.05 (ALL TWRs) 226.675	(TWR CENTER) (TWR SOUTH) 121.75 121.9	CLNC DEL 121.6	CPDLC
------------------------	---	-------------------------------------	---	--	--------------------------	-------



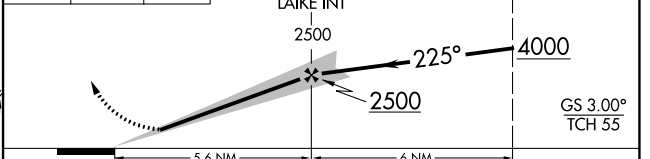
ELEV 680	D	TDZE 654
----------	----------	----------

TDZ/Cl all Rwy's except 4L
HIRL all Rwy's



MISSED APCH FIX	CHICAGO HEIGHTS
CGT	CGT
114.2	Chan 89

1100	4000	CGT	VGSI and ILS glidepath not coincident (VGSI Angle 3.00°/TCH 73).
------	------	-----	--



CATEGORY	A	B	C	D
S-ILS 22L	854/18 200 (200-1/2)			
S-LOC 22L	1120/24	466 (500-1/2)	1120/50	466 (500-1)
C CIRCLING	1220-1	540 (600-1)	1220-1 1/2	1460-2 1/2
			540 (600-1/2)	780 (800-2/2)

EC-3, 08 AUG 2024 to 05 SEP 2024

EC-3, 08 AUG 2024 to 05 SEP 2024