

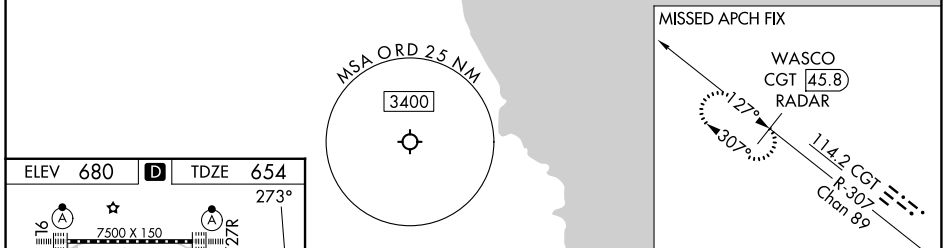
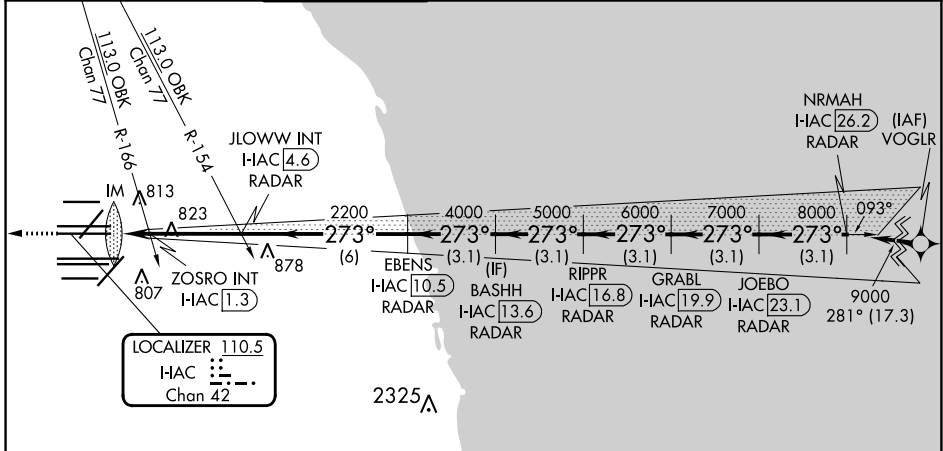
LOC/DME I-IAC 110.5 Chan 42	APP CRS 273°	Rwy ldg 11260 TDZE 654 Apt Elev 680
---	------------------------	--

ILS or LOC RWY 27L

CHICAGO O'HARE INTL (ORD)

RNP APCH-GPS from VOGLR. Aircraft not GPS equipped - RADAR required for procedure entry. DME or RADAR required.	ALSF-2 (A)	MISSED APPROACH: Climb to 1200 then climb to 4000 on heading 265° and on CGT VORTAC R-307 to WASCO/CGT 45.8 DME/RADAR and hold.
▼ Simultaneous approach authorized. For inop ALS, increase S-LOC 27L Cat C/D visibility to 1½ SM.		

D-ATIS 135.4 282.225	CHICAGO APP CON 119.0 292.125	O'HARE TOWER 126.9 348.0	GND CON (TWR NORTH) 124.125 (TWR SOUTH) 118.05 (ALL TWRs) 226.675	(TWR CENTER) 121.75 (OBND) 121.9 (IBND)	CLNC DEL 121.6	CPDLC
--	---	------------------------------------	---	---	--------------------------	-------



ELEV 680	D	TDZE 654			
HIRL all Rwys TDZ/CL all Rwys except 4L					
FAF to MAP 4.7 NM					
Knots	60	90	120	150	180
Min:Sec	4:42	3:08	2:21	1:53	1:34

1200	4000	CGT R-307	WASCO CGT [45.8] RADAR	VGSI and ILS glidepath not coincident (VGSI Angle 3.00/TCH 77).
hdg 265°		JLOWW INT I-HAC 4.6 RADAR	BASHH I-HAC [13.6] RADAR	GRABL I-HAC [19.9] RADAR
I-HAC DME ANTENNA		ZOSRO INT I-HAC [1.3] RADAR	RIPPR I-HAC [16.8] RADAR	JOEBO I-HAC [23.1] RADAR
I-HAC [0.2]		EBENS I-HAC [10.5] RADAR	NRMAH I-IAC [26.2] RADAR	
2200		9000		
4000		8000		
5000		7000		
6000		6000		
7000		5000		
8000		4000		
9000		3000		
GS 3.00°		TCH 57		
CATEGORY	A	B	C	D
S-ILS 27L	854/18 200 (200-½)			
S-LOC 27L	1160/24	506 (500-½)	1160/55	506 (500-1)
ZOSRO FIX MINIMUMS (DUAL VOR RECEIVERS OR DME REQUIRED)				
S-LOC 27L	1080/24	426 (400-½)	1080/40	426 (400-¾)

EC-3, 08 AUG 2024 to 05 SEP 2024

EC-3, 08 AUG 2024 to 05 SEP 2024