

| | | |
|--|------------------------|--|
| LOC/DME I-OYG 111.9 Chan 56 | APP CRS 093° | Rwy Idg 11245 TDZE 673 Apt Elev 680 |
|--|------------------------|--|

ILS or LOC RWY 9C

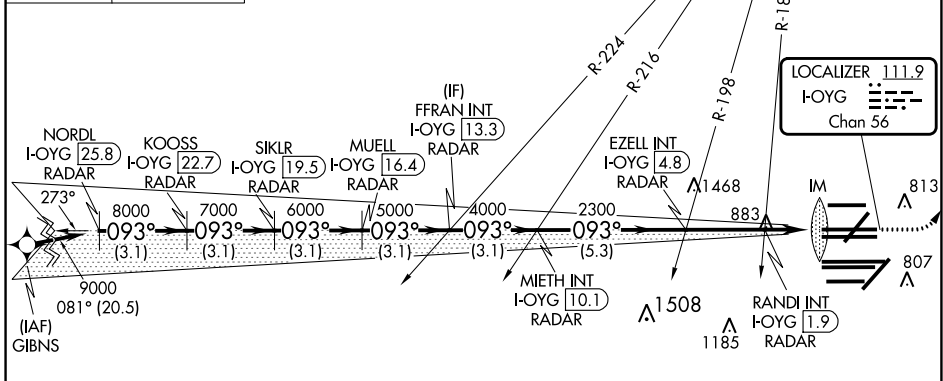
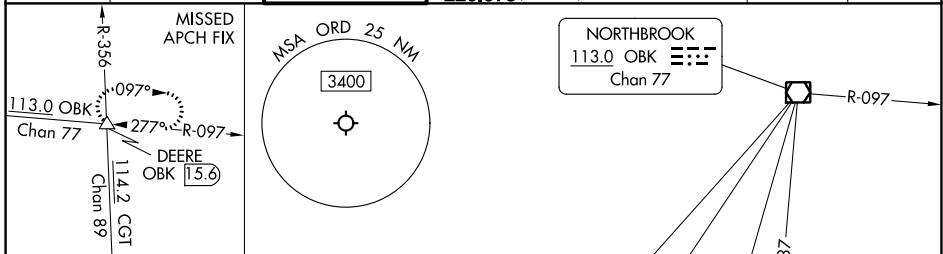
CHICAGO O'HARE INTL (ORD)

DME or RADAR required. From GIBNS: RNAV 1-GPS required. Aircraft not GPS equipped - RADAR required for procedure entry.

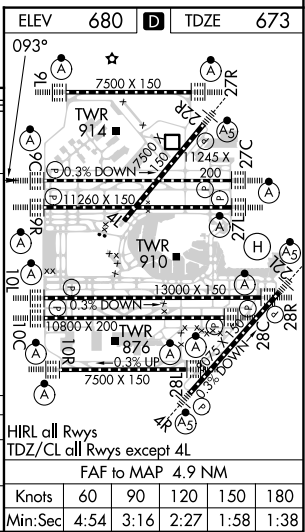
ALSF-2 MISSED APPROACH: Climb to 1200 then climbing left turn to 4000 on heading 037° and OBK VOR/DME R-097 to DEERE INT/ OBK 15.6 DME and hold.

Simultaneous approach authorized. For inop ALS, increase S-LOC 9C Cat C/D visibility to 1½ SM.

| | | | | | |
|--|---|-------------------------------------|--|--------------------------|-------|
| D-ATIS 135.4 282.225 | CHICAGO APP CON 119.0 292.125 | O'HARE TOWER 121.15 348.0 | GND CON (TWR CENTER) 124.125 (TWR NORTH) 118.05 (TWR SOUTH) 226.675 (ALL TWRs) | CLNC DEL 121.6 | CPDLC |
|--|---|-------------------------------------|--|--------------------------|-------|



| | | | | | |
|----------------------------|---|-------------|----------|-------------|--------|
| NORDL I-OYG 25.8 RADAR | VGSI and ILS glidepath not coincident (VGSI Angle 3.00/TCH 72). | 1200 | 4000 | OBK R-097 | DEERE |
| KOOSS I-OYG 22.7 RADAR | | ↑ | hdg 037° | | |
| SIKLR I-OYG 19.5 RADAR | | | | | |
| MUELL I-OYG 16.4 RADAR | | | | | |
| FRAN INT I-OYG 13.3 RADAR | | | | | |
| EZZEL INT I-OYG 4.8 RADAR | | | | | |
| MIETH INT I-OYG 10.1 RADAR | | | | | |
| RANDI INT I-OYG 1.9 RADAR | | | | | |
| I-OYG DME ANTENNA | | | | | |
| IM | | | | | |
| I-OYG 0.2 | | | | | |
| 3.1 NM | 3.1 NM | 3.1 NM | 3.1 NM | 3.1 NM | 5.3 NM |
| | | | | | 2.8 NM |
| | | | | | 0.7 |
| | | | | | 1.1 |
| | | | | | 0.1 |
| CATEGORY | A | B | C | D | |
| S-ILS 9C | 873/18 200 (200-½) | | | | |
| S-LOC 9C | 1140/24 | 467 (500-½) | 1140/50 | 467 (500-1) | |



EC-3, 08 AUG 2024 to 05 SEP 2024

EC-3, 08 AUG 2024 to 05 SEP 2024